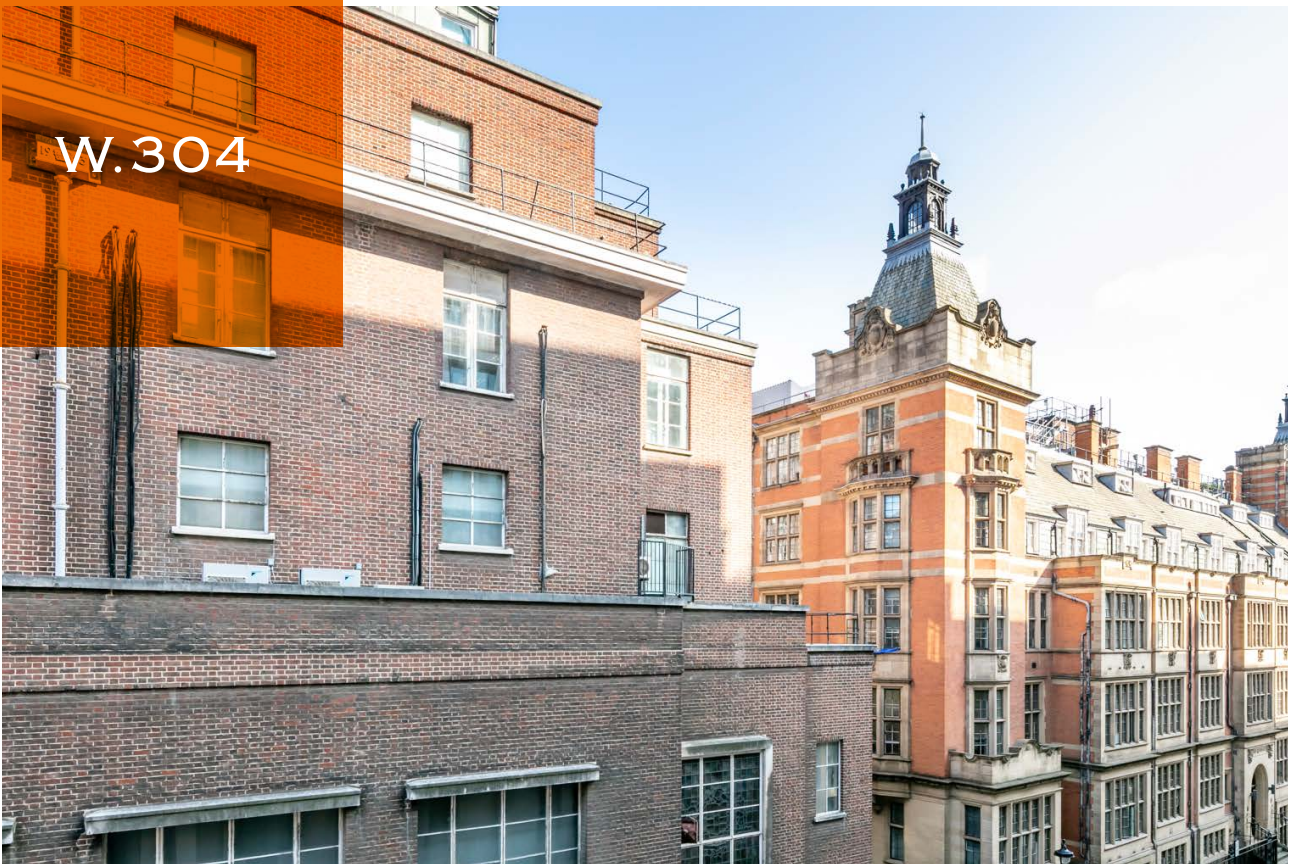


LINCOLN SQUARE

LODHA

W.304



£2,900,000

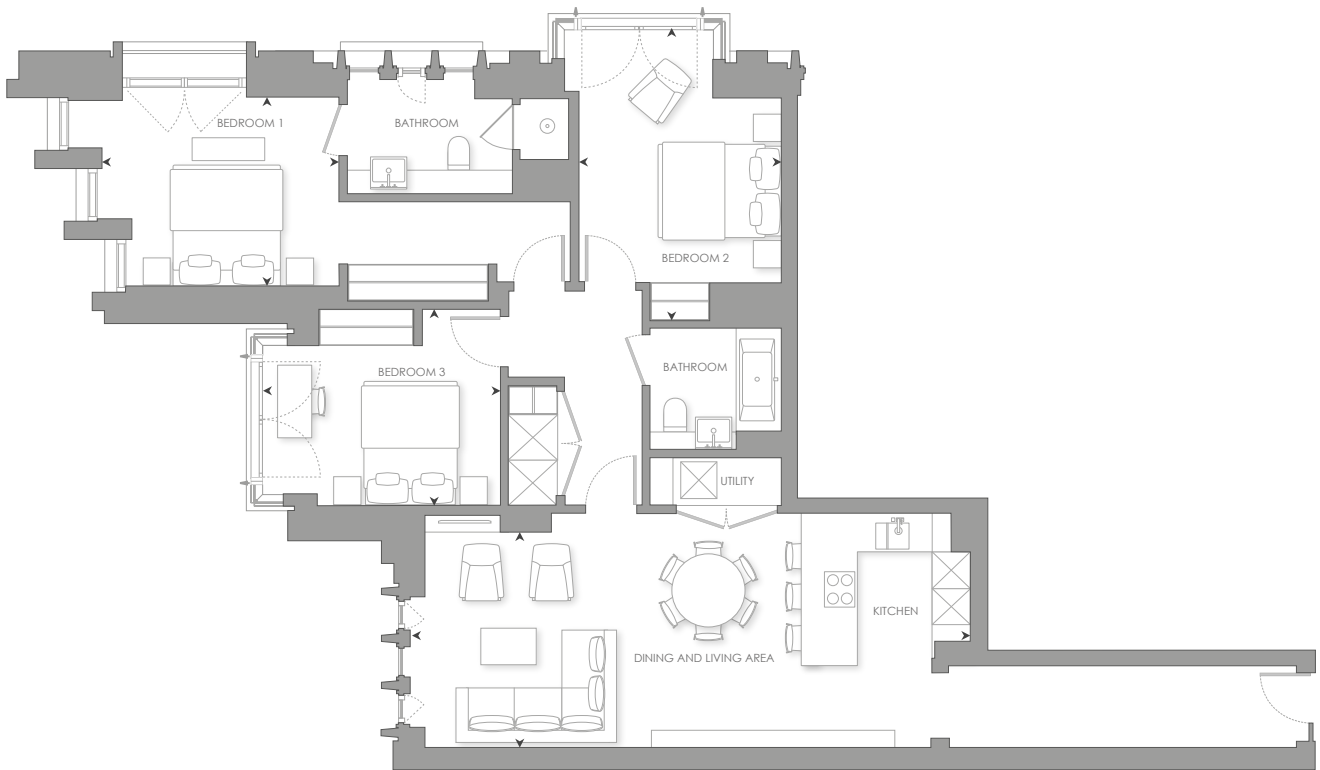
lincolnsquare.co.uk

THE INTERIORS

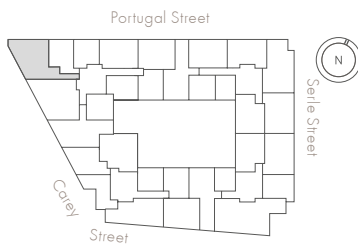


W.304

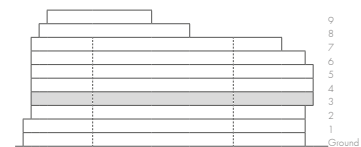
3 BEDROOM



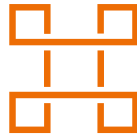
LEVEL 3



ELEVATION



INTERNAL AREA	112 sq m	1,206 sq ft	- Dual aspect
LIVING ROOM/DINING/KITCHEN	9.25 x 3.87 m	30' 5" x 12' 8"	- Terraces from living room and bedroom 3
BEDROOM 1	3.89 x 3.10 m	12' 9" x 10' 2"	- Master bedroom suite with en-suite and fitted wardrobe
BEDROOM 2	3.35 x 4.84 m	10' 11" x 15' 10"	- Large, open-plan living area
BEDROOM 3	3.92 x 3.25 m	12' 10" x 10' 8"	- Social breakfast bar



LINCOLN SQUARE

LODHA



CONTACT DETAILS

LODHA UK

Lodha UK is an established London-based development company with a strong in-house development team with capabilities in planning, design and procurement, as well as marketing, sales and customer support. Lodha UK is the development subsidiary of Lodha Group, a multinational premium real estate developer with a tradition of creating world-class developments.

Show apartment at:
Lincoln Square
18 Portugal Street
WC2A 2AT

Lodha Developers UK Ltd.
3 St. James's Square
SW1Y 4JU
Tel: +44 20 7004 0910