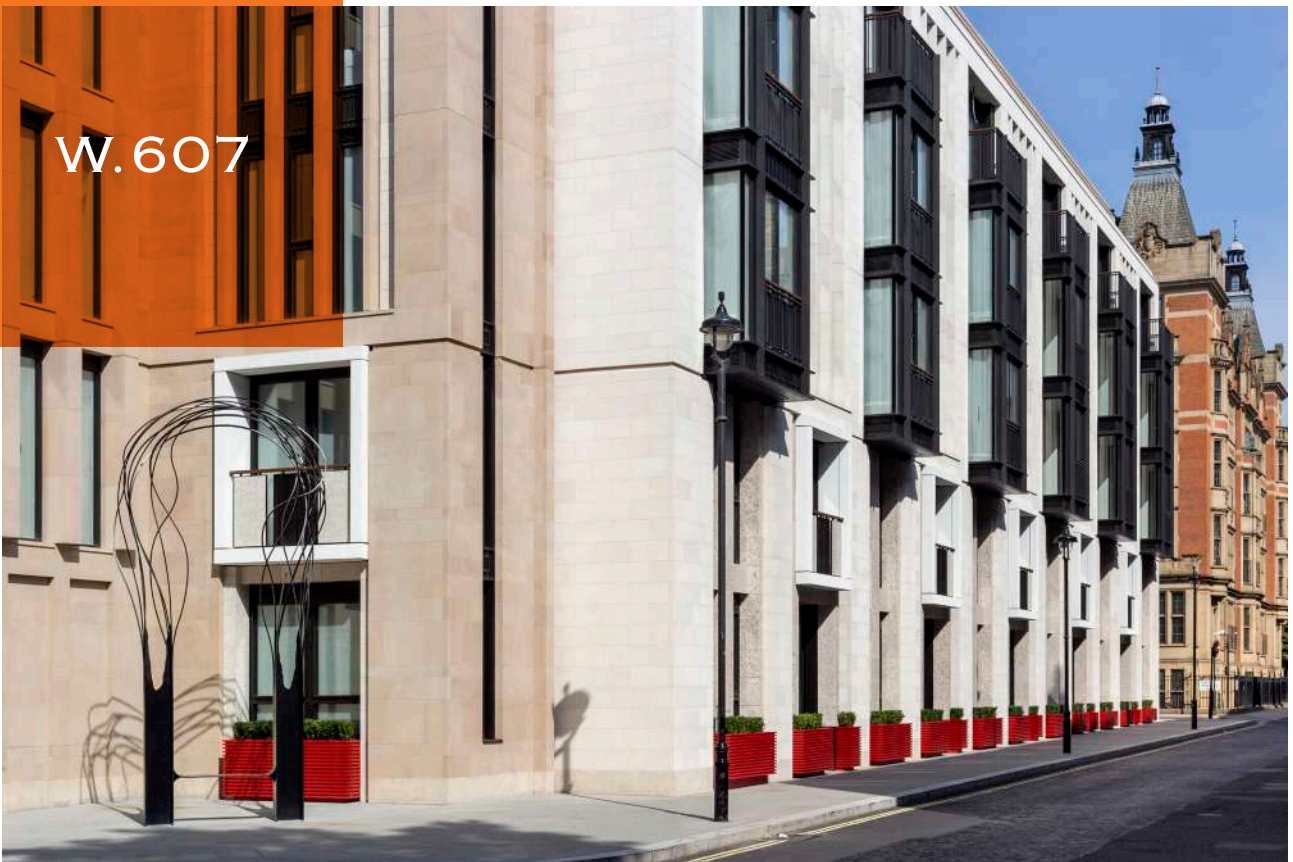




LINCOLN SQUARE

LODHA

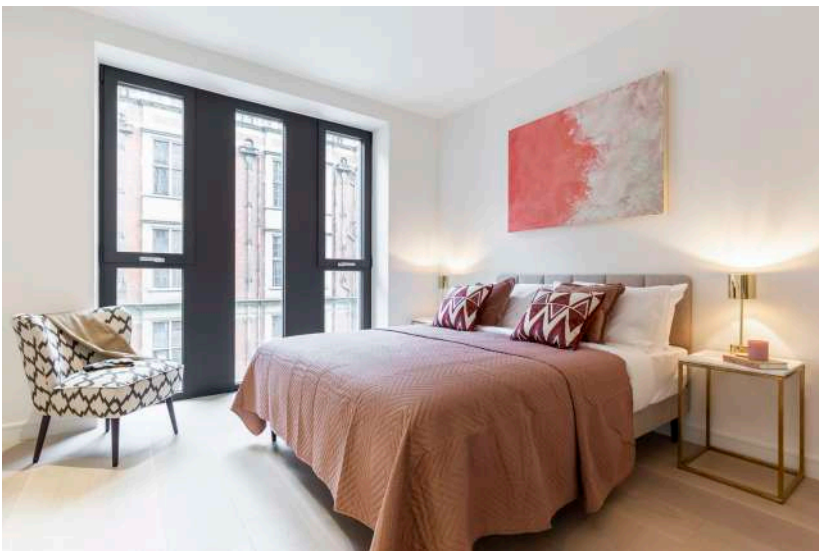
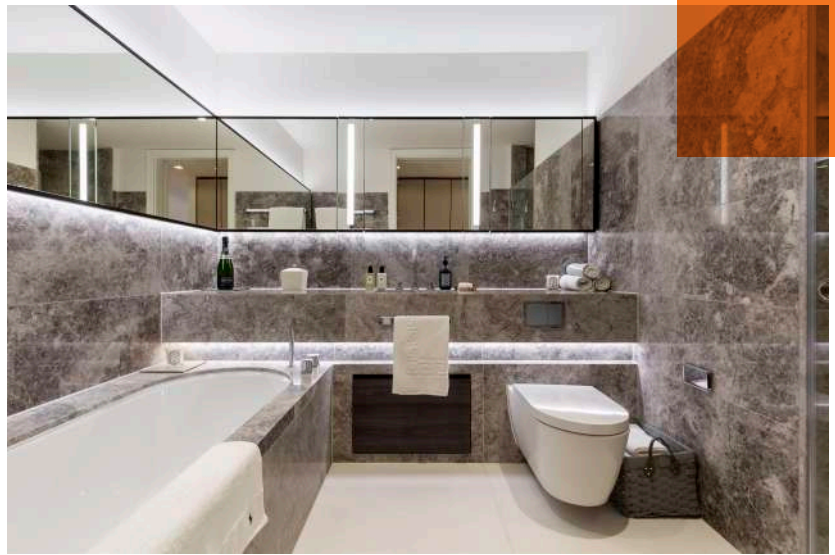
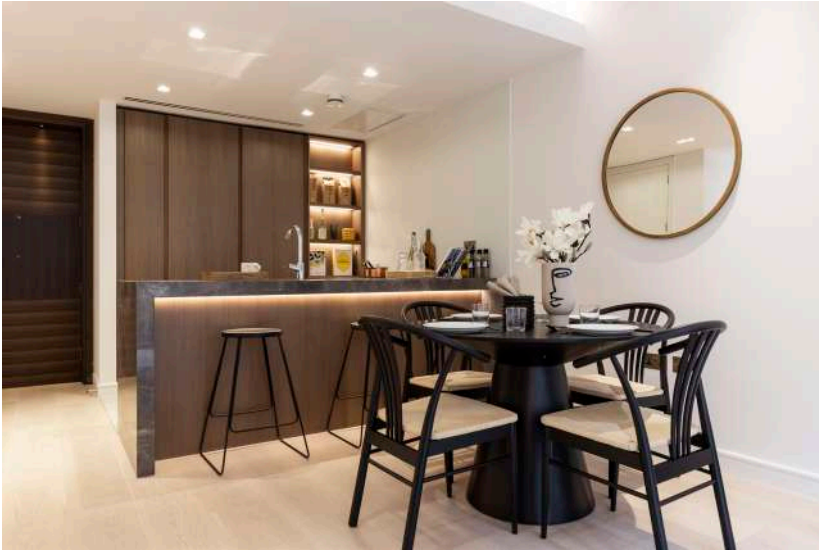
W.607



£2,400,000

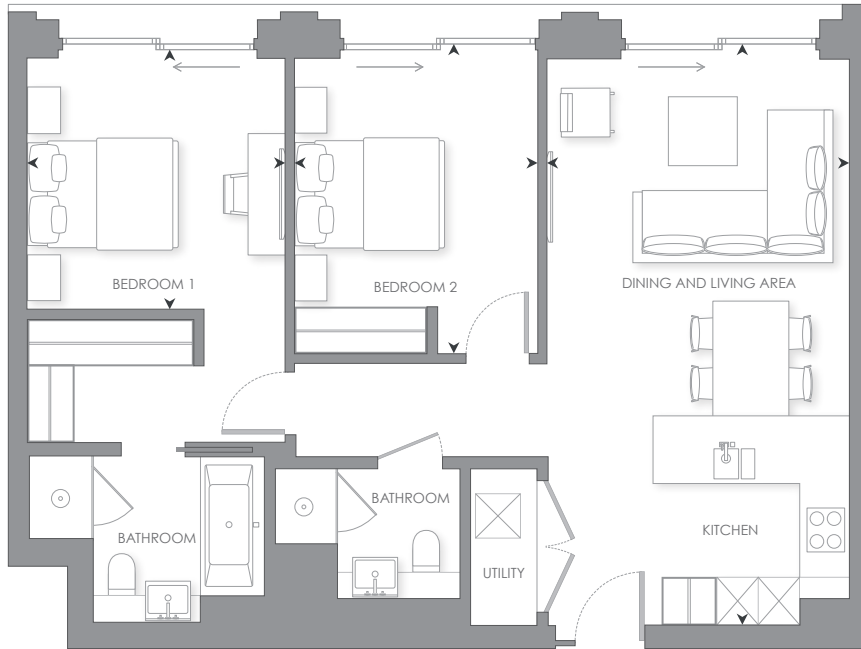
[lincolnsquare.co.uk](http://lincolnsquare.co.uk)

# THE INTERIORS



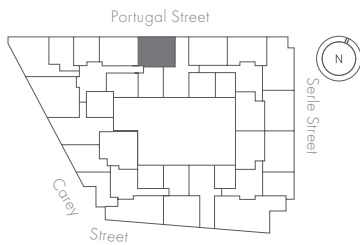
# W.607

## 2 BEDROOM

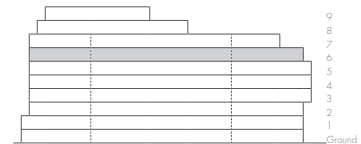


Scale 1:100

### LEVEL 6



### ELEVATION



|                            |               |                    |
|----------------------------|---------------|--------------------|
| INTERNAL AREA              | 83 sq m       | 892 sq ft          |
| LIVING ROOM/DINING/KITCHEN | 4.03 x 7.66 m | 13' 2" x 25' 1" ft |
| BEDROOM 1                  | 3.45 x 3.48 m | 11' 3" x 11' 5" ft |
| BEDROOM 2                  | 3.23 x 4.12 m | 10' 7" x 13' 6" ft |

- Juliet balconies from all principle rooms
- Master bedroom suite with four-fixture en-suite and fitted wardrobe
- Social breakfast bar



LINCOLN SQUARE

LODHA



## CONTACT DETAILS

LODHA UK

Lodha UK is an established London-based development company with a strong in-house development team with capabilities in planning, design and procurement, as well as marketing, sales and customer support. Lodha UK is the development subsidiary of Lodha Group, a multinational premium real estate developer with a tradition of creating world-class developments.

Show apartment at:  
Lincoln Square  
18 Portugal Street  
WC2A 2AT

Lodha Developers UK Ltd.  
3 St. James's Square  
SW1Y 4JU  
Tel: +44 20 7004 0910