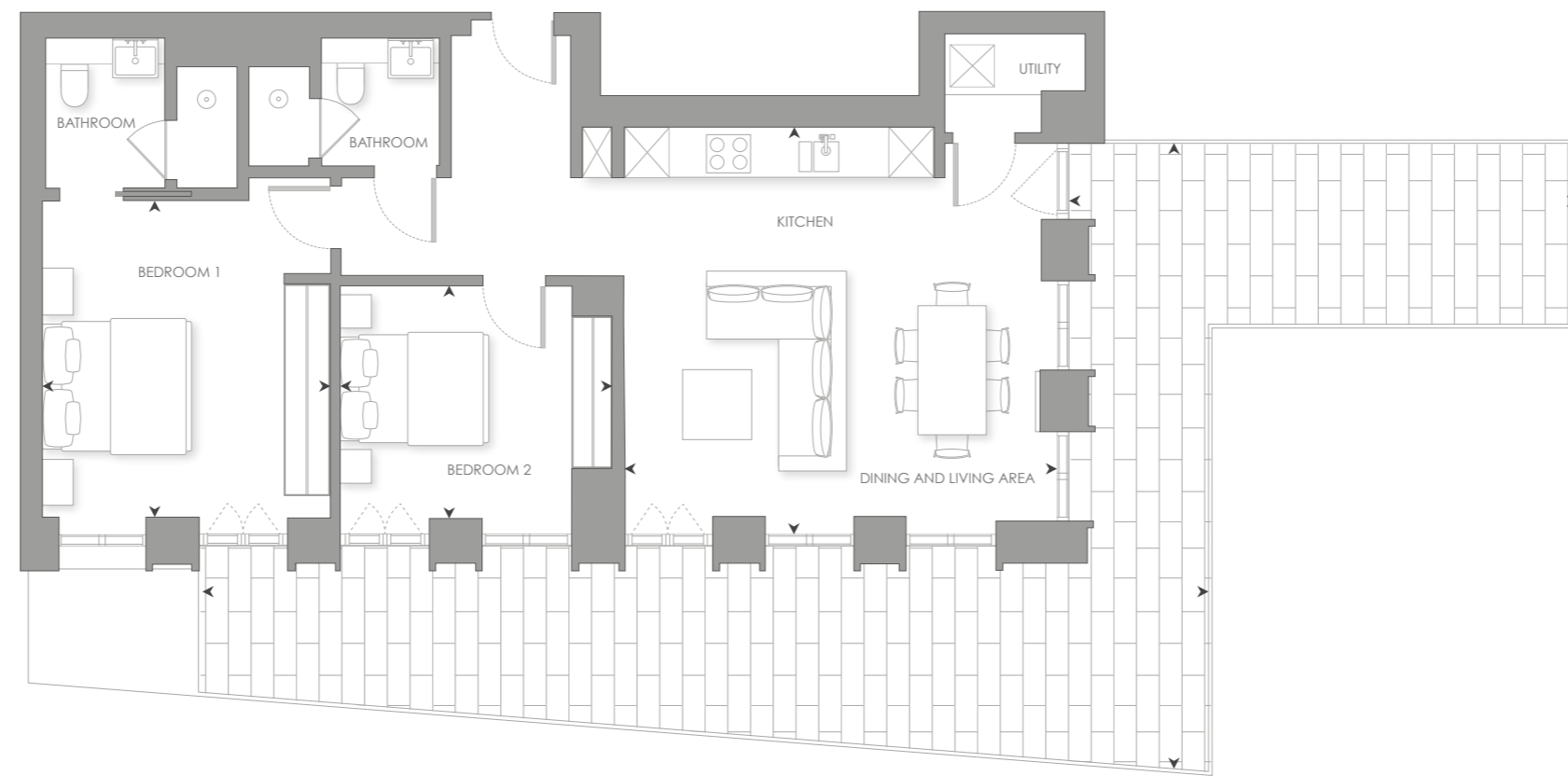


## E.602 - 2 BEDROOM

INTERNAL AREA	82 sq m	881 sq ft
LIVING ROOM/DINING/KITCHEN	5.74 x 5.38 m	18' 10" x 17' 8"
BEDROOM 1	3.83 x 4.19m	12' 7" x 13' 9"
BEDROOM 2	3.62 x 3.06m	11' 11" x 10' 0"
TERRACE AREA	54 sq m	560 sq ft

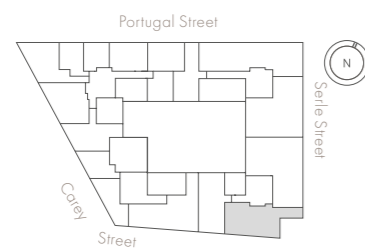
- Dual aspect
- Large, south facing wrap-around terrace, with roof-top views of the Royal Courts of Justice and the City of London
- Master bedroom suite with en-suite and fitted wardrobe
- Social breakfast bar



0m 1m 5m

Scale 1:100

### LEVEL 6



### ELEVATION

