

N.3 - 1 BEDROOM

INTERNAL AREA

65 sq m

701 sq ft

- Dual aspect

LIVING ROOM/DINING/KITCHEN

6.79 x 6.55m

22' 3" x 21' 6" ft

- Master bedroom area with fitted wardrobe

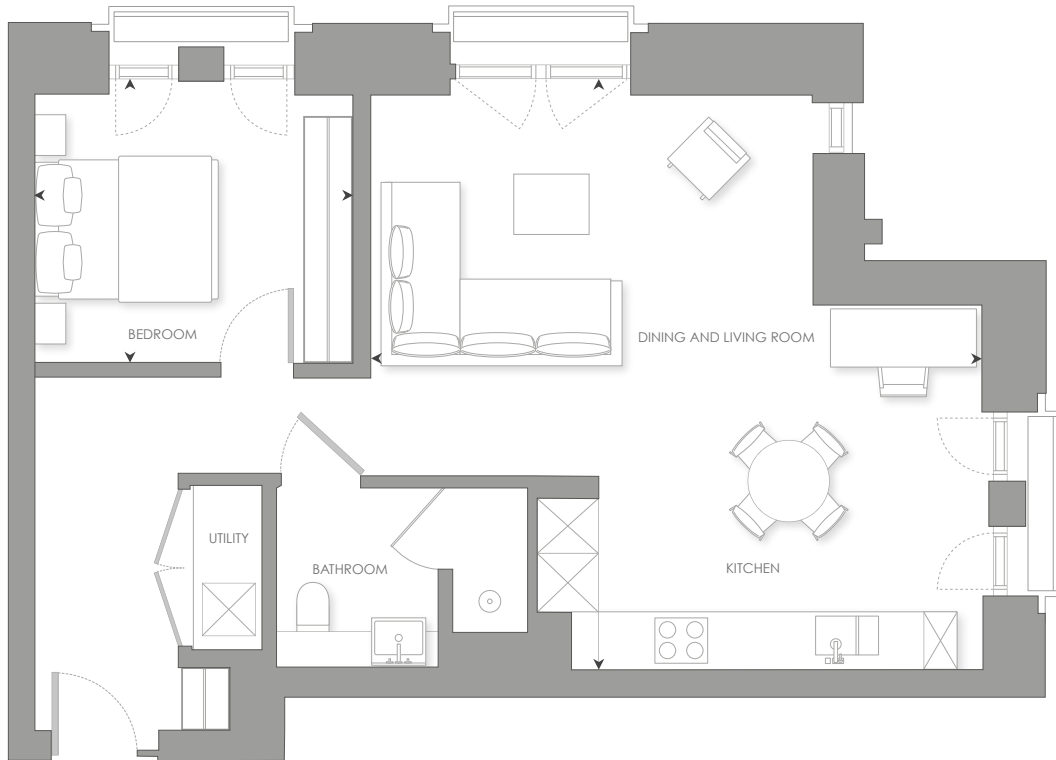
BEDROOM 1

3.58 x 3.17 m

11' 8" x 10' 4" ft

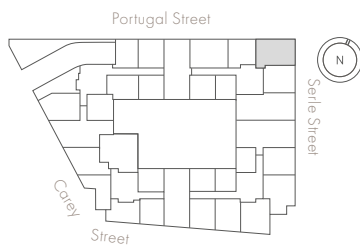
- Additional hanging space in the hallway

- Floor to ceiling windows



Scale 1:75

GROUND FLOOR



ELEVATION

