

S.1 - STUDIO

INTERNAL AREA

LIVING ROOM/DINING/KITCHEN

BEDROOM 1

50 sq m

7.18 x 3.82 m

3.73 x 3.08m

543 sq ft

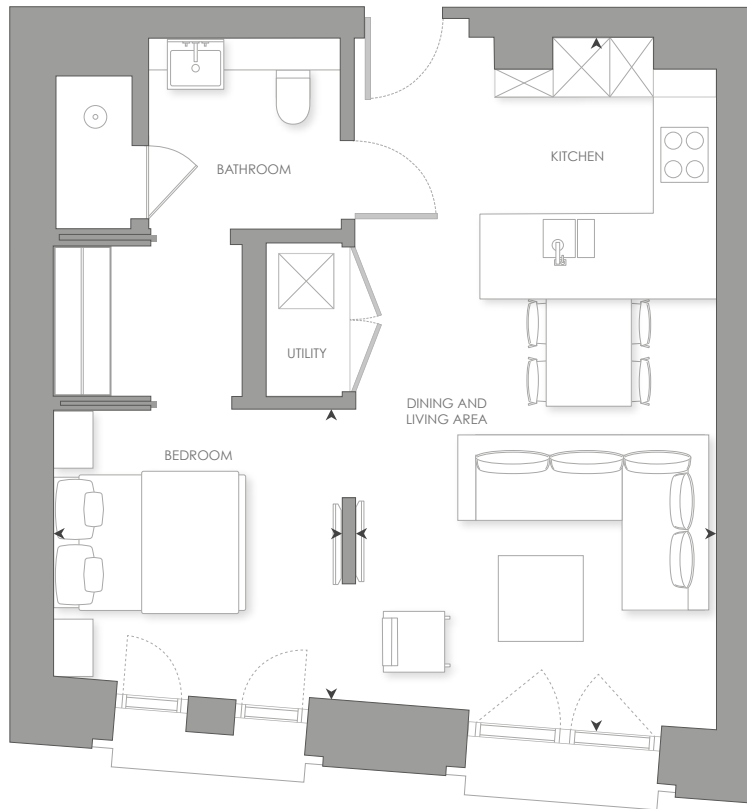
23' 6" x 12' 6" ft

12' 3" x 10' 1" ft

- South facing views towards the Royal Courts of Justice

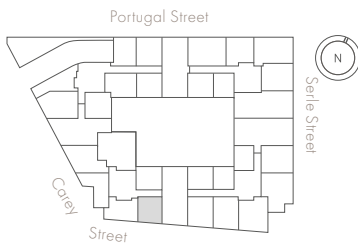
- Master bedroom area with walk-in wardrobe

- Social breakfast bar



Scale 1:75

GROUND FLOOR



ELEVATION

