

E9 - 1 BEDROOM

INTERNAL AREA

LIVING ROOM/DINING/KITCHEN

BEDROOM 1

59 sq m

4.07 x 8.20m

2.90 x 4.28m

638 sq ft

13' 4" x 26' 11"

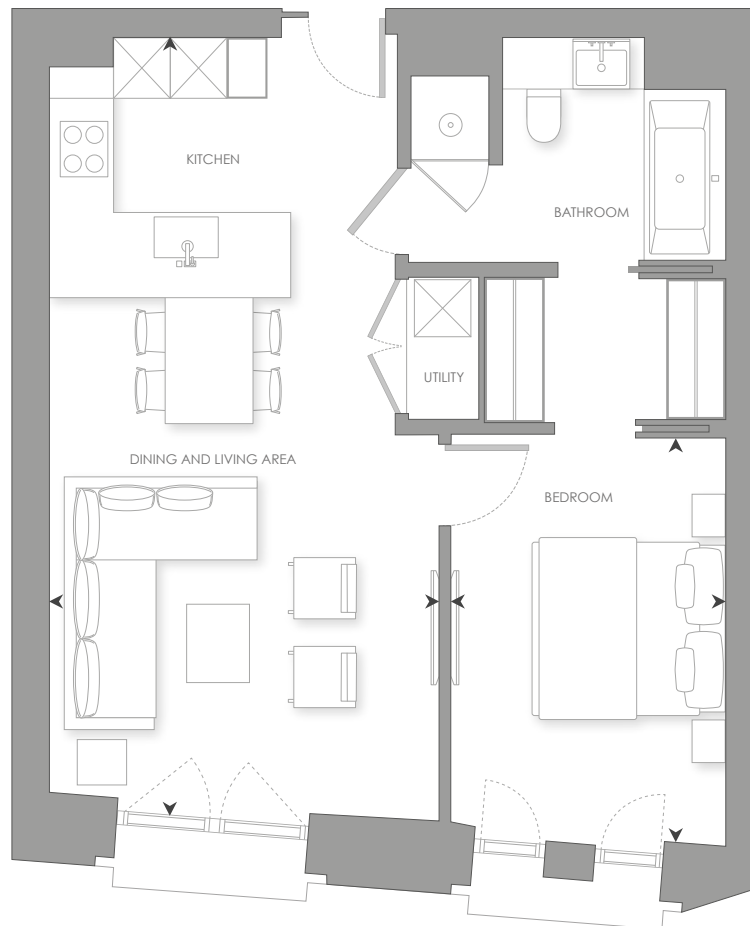
9' 6" x 14' 0"

- South facing

- Master bedroom suite with four-fixture en-suite and walk-in wardrobe

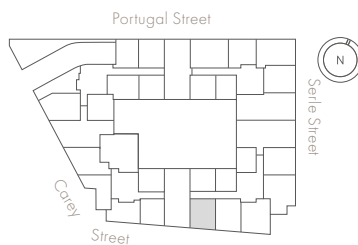
- Large, open-plan living area

- Social breakfast bar



Scale 1:75

GROUND FLOOR



ELEVATION

