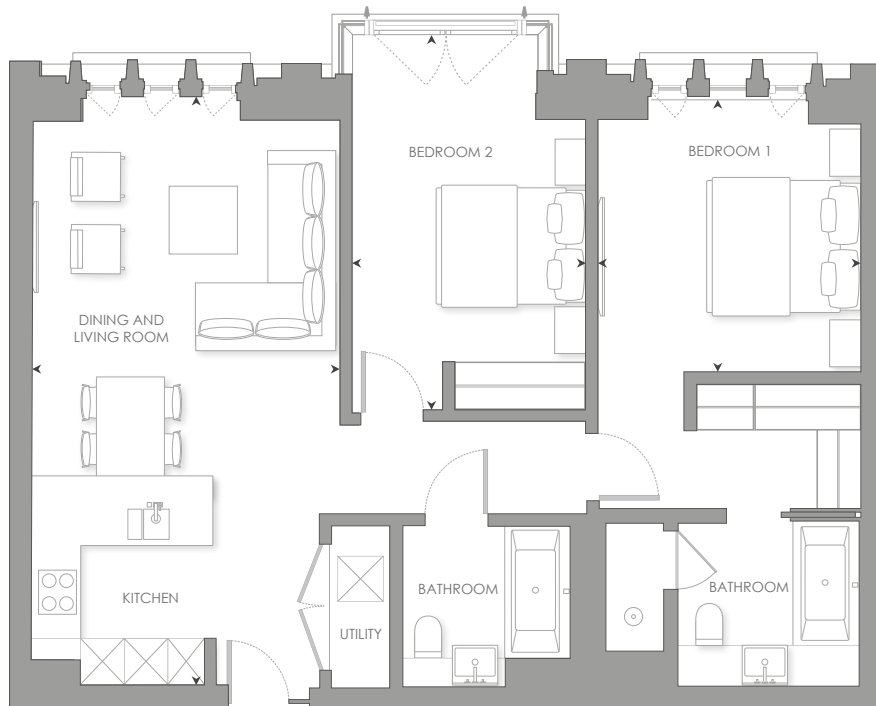


## N.204, N.304, N.404 – 2 BEDROOM

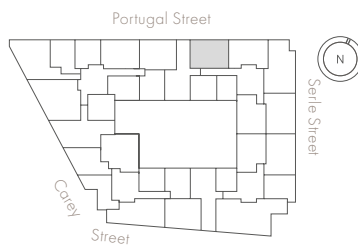
INTERNAL AREA	87 sq m	935 sq ft
LIVING ROOM/DINING/KITCHEN	4.12 x 7.79 m	13' 5" x 25' 6" ft
BEDROOM 1	3.52 x 3.68 m	11' 6" x 12' 0" ft
BEDROOM 2	3.11 x 5.08 m	10' 2" x 16' 7" ft

- Views of the historic Land Registry building
- Master bedroom suite with four-fixture en-suite and walk-in wardrobe
- Bay window to bedroom 2



Scale 1:100

### LEVEL 2, 3, 4



### ELEVATION

