

LINCOLN SQUARE

LODHA

N.506



£4,250,000

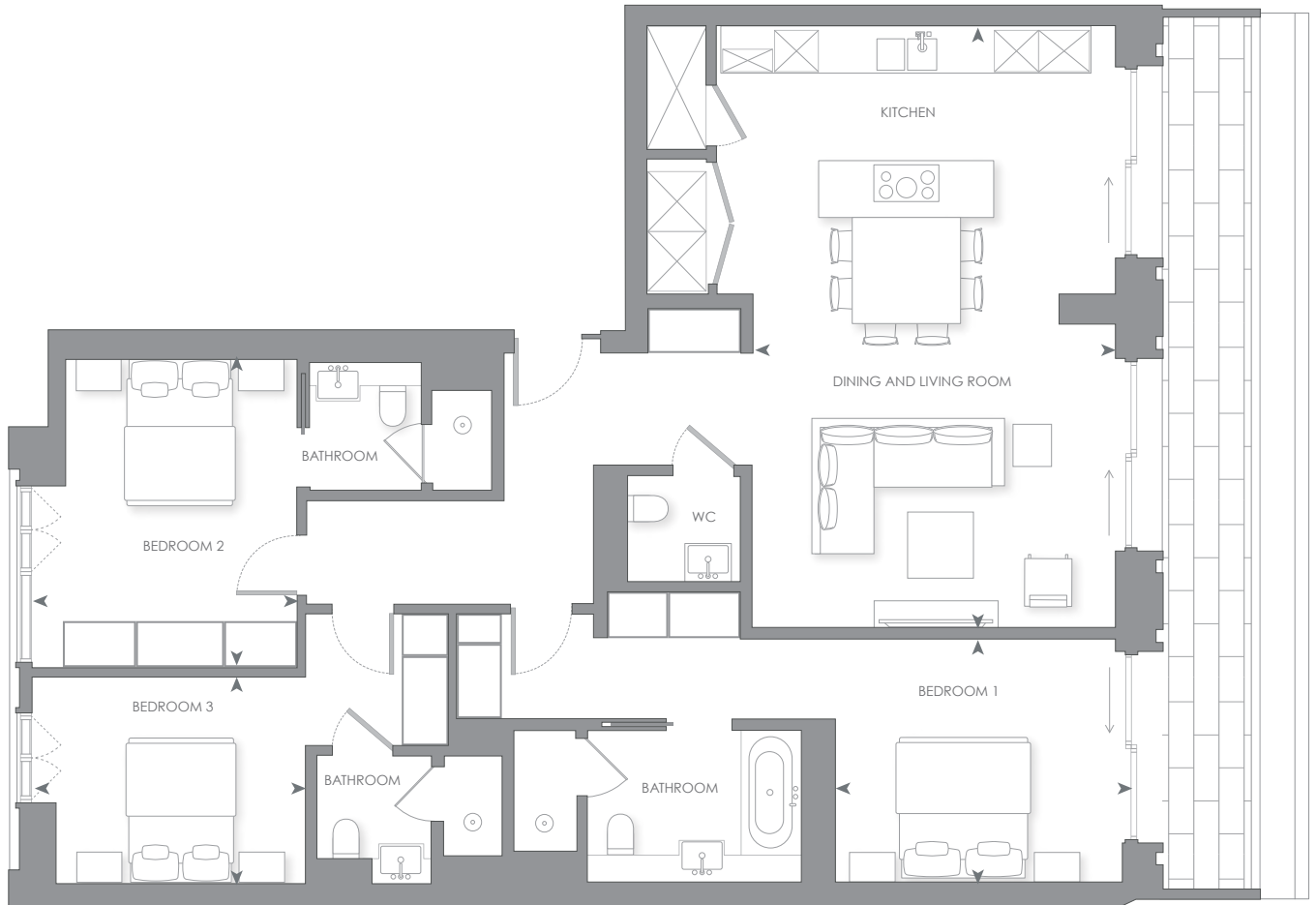
lincolnsquare.co.uk

THE INTERIORS



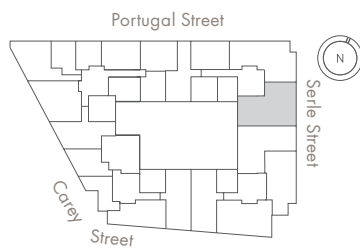
N.506

3 BEDROOM

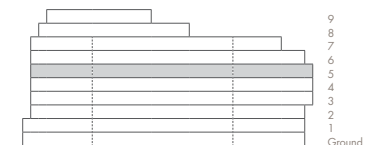


0m 1m 5m

LEVEL 5



ELEVATION



INTERNAL AREA	134 sq m	1,444 sq ft	- Dual aspect
LIVING ROOM/DINING/KITCHEN	5.13 x 8.25 m	16' 9" x 27' 0"	- Large balcony overlooking Serle Street
BEDROOM 1	3.93 x 3.36 m	12' 1" x 11' 0"	- West-facing garden views to bedroom 2 and bedroom 3
BEDROOM 2	3.74 x 4.18 m	12' 3" x 13' 8"	- Master bedroom suite, including a four-fixture en-suite and a walk-in wardrobe
BEDROOM 3	3.74 x 4.18 m	12' 3" x 9' 5"	- En-suite to all bedrooms, plus a cloakroom
TERRACE/BALCONY AREA	20 sq m	212 sq ft	



LINCOLN SQUARE

LODHA



CONTACT DETAILS

LODHA UK

Lodha UK is an established London-based development company with a strong in-house development team with capabilities in planning, design and procurement, as well as marketing, sales and customer support. Lodha UK is the development subsidiary of Lodha Group, a multinational premium real estate developer with a tradition of creating world-class developments.

Show apartment at:
Lincoln Square
18 Portugal Street
WC2A 2AT

Lodha Developers UK Ltd.
3 St. James's Square
SW1Y 4JU
Tel: +44 20 7004 0910