

LINCOLN SQUARE

LODHA

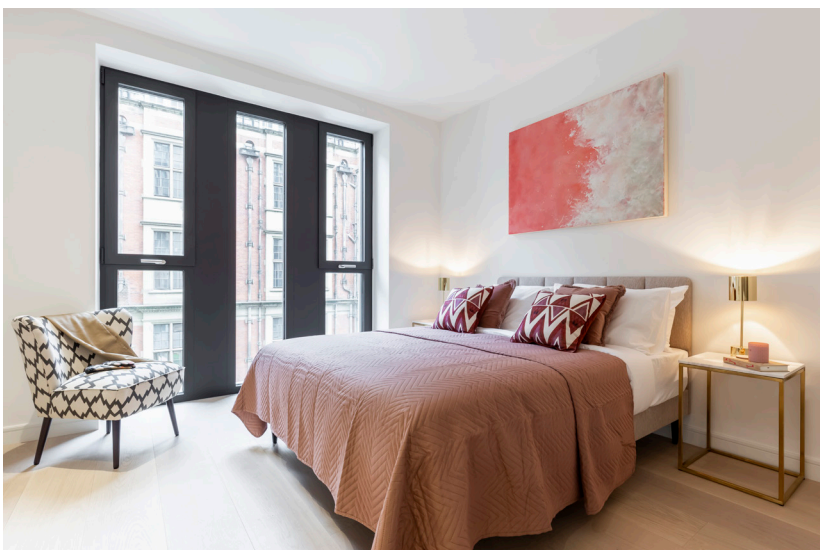
W.607



£2,450,000

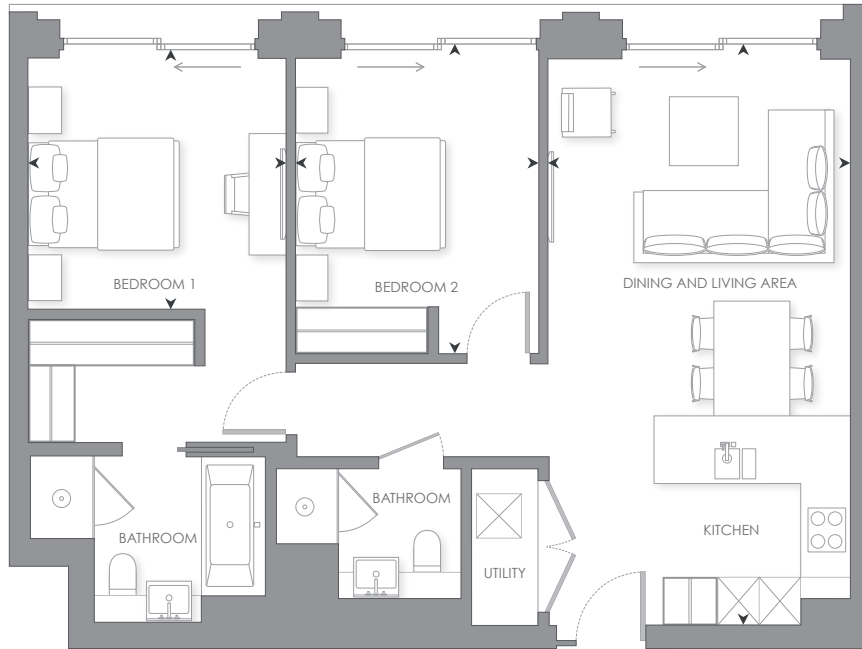
[lincolnsquare.co.uk](http://lincolnsquare.co.uk)

# THE INTERIORS



# W.607

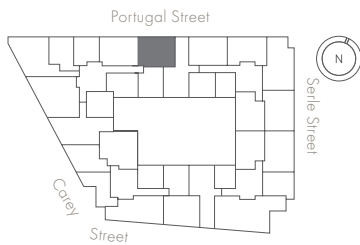
## 2 BEDROOM



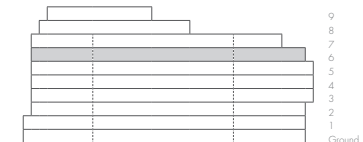
0m 1m 5m

Scale 1:100

### LEVEL 6



### ELEVATION



#### INTERNAL AREA

LIVING ROOM/DINING/KITCHEN

BEDROOM 1

BEDROOM 2

83 sq m

4.03 x 7.66 m

3.45 x 3.48 m

3.23 x 4.12 m

892 sq ft

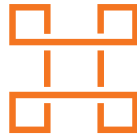
13' 2" x 25' 1" ft

11' 3" x 11' 5" ft

10' 7" x 13' 6" ft

- Juliet balconies from all principle rooms
- Master bedroom suite with four-fixture en-suite and fitted wardrobe
- Social breakfast bar





LINCOLN SQUARE

LODHA



## CONTACT DETAILS

### LODHA UK

Lodha UK is an established London-based development company with a strong in-house development team with capabilities in planning, design and procurement, as well as marketing, sales and customer support. Lodha UK is the development subsidiary of Lodha Group, a multinational premium real estate developer with a tradition of creating world-class developments.

Show apartment at:  
Lincoln Square  
18 Portugal Street  
WC2A 2AT

Lodha Developers UK Ltd.  
3 St. James's Square  
SW1Y 4JU  
Tel: +44 20 7004 0910