



LINCOLN SQUARE

LODHA

E.304  
3 BEDROOM

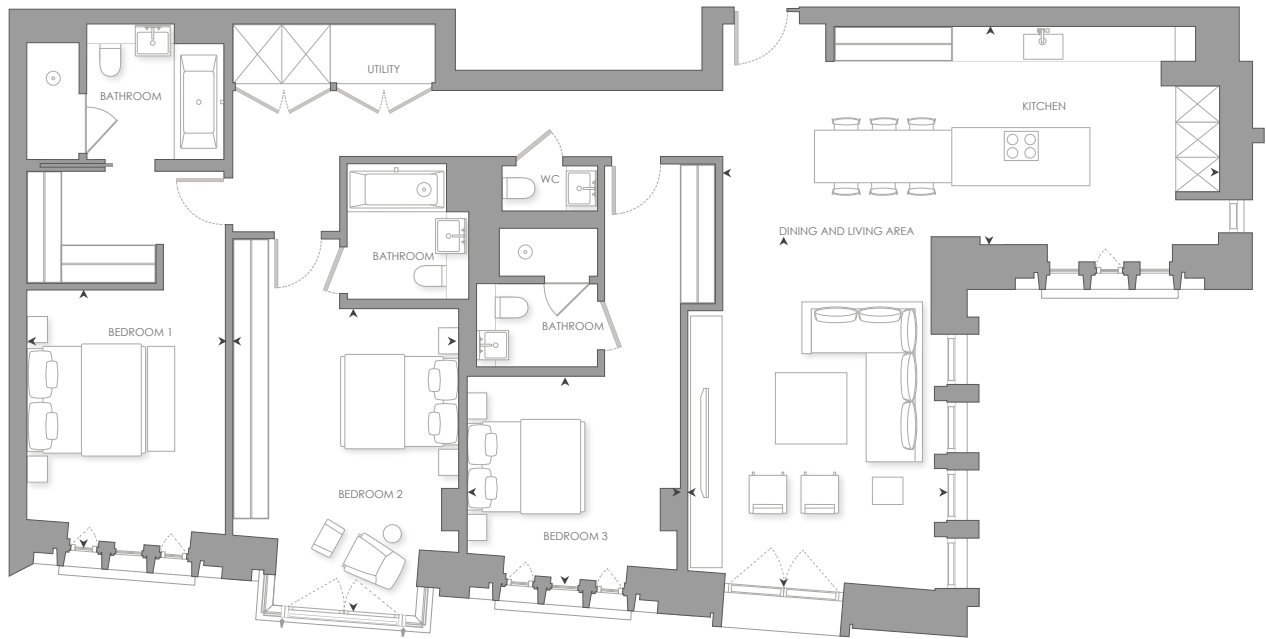


# THE INTERIORS



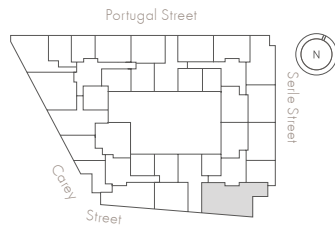




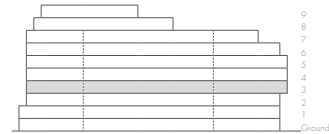


0 m 1m 5m

### LEVEL 3



### ELEVATION



INTERNAL AREA	161 sq m	1,735 sq ft
LIVING ROOM/DINING	4.47 x 5.87 m	14' 8" x 19' 3"
KITCHEN	8.53 x 3.83 m	28' 0" x 12' 7"
BEDROOM 1	3.42 x 4.32 m	11' 3" x 14' 2"
BEDROOM 2	5.20 x 3.90 m	17' 0" x 12' 9"
BEDROOM 3	3.62 x 3.46 m	11' 11" x 11' 4"

- Dual aspect, with views over the Royal Courts of Justice
- Juliet balcony from living area
- Bay window to bedroom 2
- Master bedroom suite with four-fixture en-suite and walk-in wardrobe
- En-suites to bedrooms 2 and 3, plus additional guest cloakroom

**E.304**  
3 BEDROOM

£4,100,000





LINCOLN SQUARE

LODHA

## CONTACT DETAILS

LODHA UK

Lodha UK is an established London-based development company with a strong in-house development team with capabilities in planning, design and procurement, as well as marketing, sales and customer support. Lodha UK is the development subsidiary of Lodha Group, a multinational premium real estate developer with a tradition of creating world-class developments.

Show apartment at:  
Lincoln Square  
18 Portugal Street  
WC2A 2AT

Lodha Developers UK Ltd.  
3 St. James's Square  
SW1Y 4JU  
Tel: +44 20 7004 0910

[LINCOLNSQUARE.CO.UK](http://LINCOLNSQUARE.CO.UK)