



LINCOLN SQUARE

LODHA

E.8

1 BEDROOM

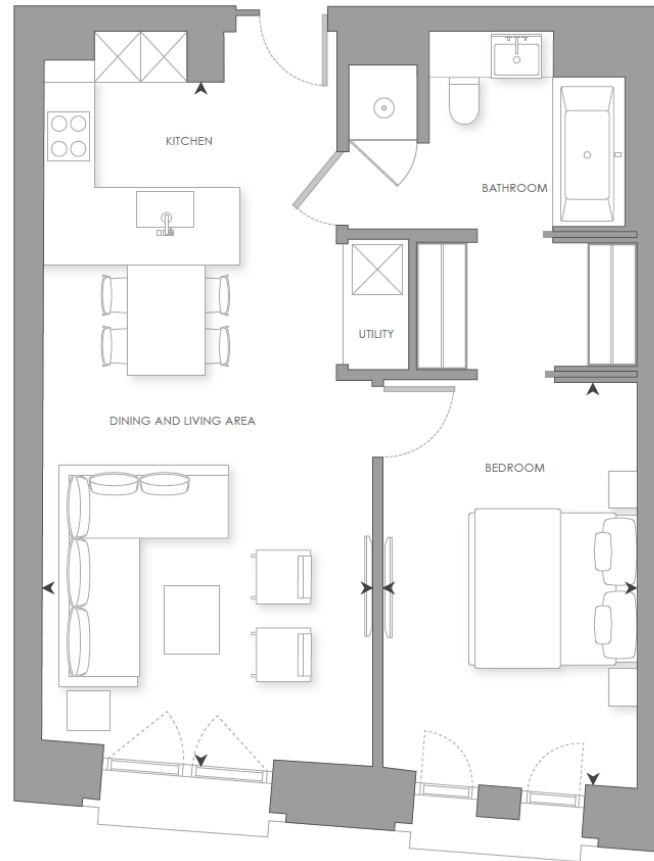


# THE INTERIORS





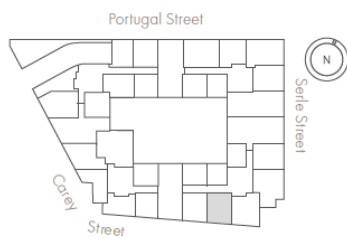




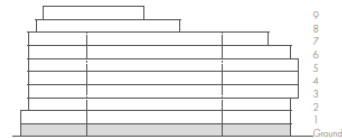
0m 1m 5m

Scale 1:75

### GROUND FLOOR



### ELEVATION



#### INTERNAL AREA

LIVING ROOM/DINING/KITCHEN  
BEDROOM 1

64 sq m

4.00 x 8.17m

3.08 x 4.87m

690 sq ft

13' 1" x 26' 10"

10' 1" x 15' 11"

- South facing
- Master bedroom suite with four-fixture en-suite and walk-in wardrobe
- Large, open-plan living area
- Social breakfast bar

# E.8

## 1 BEDROOM

## £1,625,000





LINCOLN SQUARE

LODHA

## CONTACT DETAILS

LODHA UK

Lodha UK is an established London-based development company with a strong in-house development team with capabilities in planning, design and procurement, as well as marketing, sales and customer support. Lodha UK is the development subsidiary of Lodha Group, a multinational premium real estate developer with a tradition of creating world-class developments.

Show apartment at:  
Lincoln Square  
18 Portugal Street  
WC2A 2AT

Lodha Developers UK Ltd.  
3 St. James's Square  
SW1Y 4JU  
Tel: +44 20 7004 0910

[LINCOLNSQUARE.CO.UK](http://LINCOLNSQUARE.CO.UK)