



LINCOLN SQUARE

LODHA

N.5

3 BEDROOM

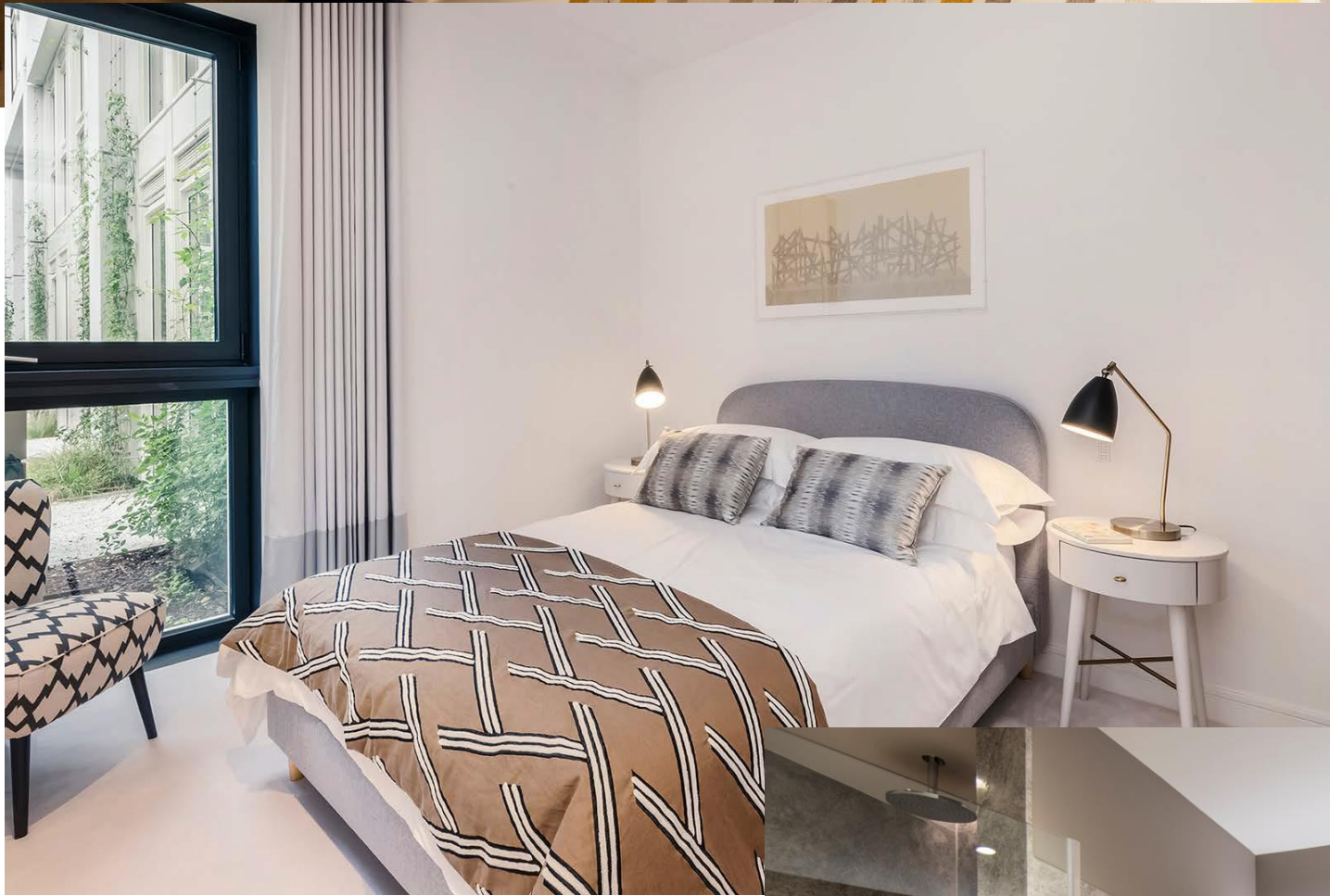


# THE INTERIORS





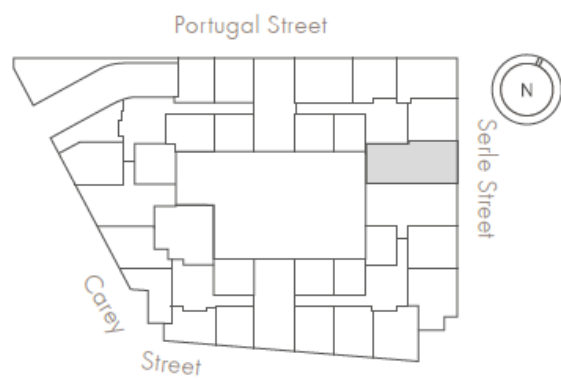
# THE INTERIORS



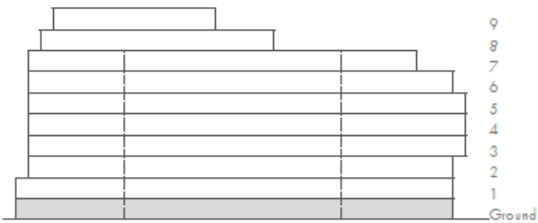




### GROUND FLOOR



### ELEVATION



INTERNAL AREA	123 sq m	1,324 sq ft	- Own front door
LIVING ROOM/DINING/KITCHEN	8.64 x 4.53 m	28' 4" x 14' 10"	- Private patio garden from the master bedroom
BEDROOM 1	3.74 x 3.64 m	12' 3" x 11' 11"	- Master bedroom suite with en-suite and fitted wardrobe
BEDROOM 2	4.07 x 3.13 m	13' 4" x 10' 3"	- En-suite to bedroom 2
BEDROOM 3	4.49 x 3.09 m	14' 8" x 10' 1" ft	- Dedicated utility room
PATIO AREA	10 sq m	107 sq ft	- Social breakfast bar

N.5  
3 BEDROOM

£2,995,000





LINCOLN SQUARE

LODHA

## CONTACT DETAILS

### LODHA UK

Lodha UK is an established London-based development company with a strong in-house development team with capabilities in planning, design and procurement, as well as marketing, sales and customer support. Lodha UK is the development subsidiary of Lodha Group, a multinational premium real estate developer with a tradition of creating world-class developments.

Show apartment at:  
Lincoln Square  
18 Portugal Street  
WC2A 2AT

Lodha Developers UK Ltd.  
3 St. James's Square  
SW1Y 4JU  
Tel: +44 20 7004 0910

[LINCOLNSQUARE.CO.UK](http://LINCOLNSQUARE.CO.UK)