

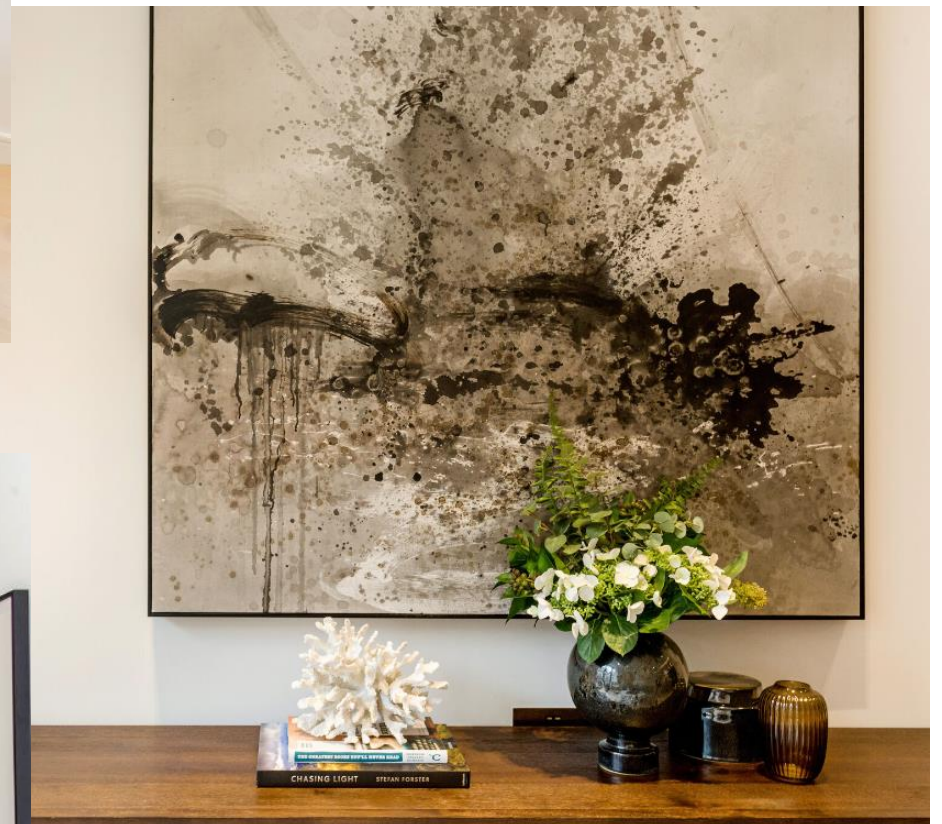


LINCOLN SQUARE

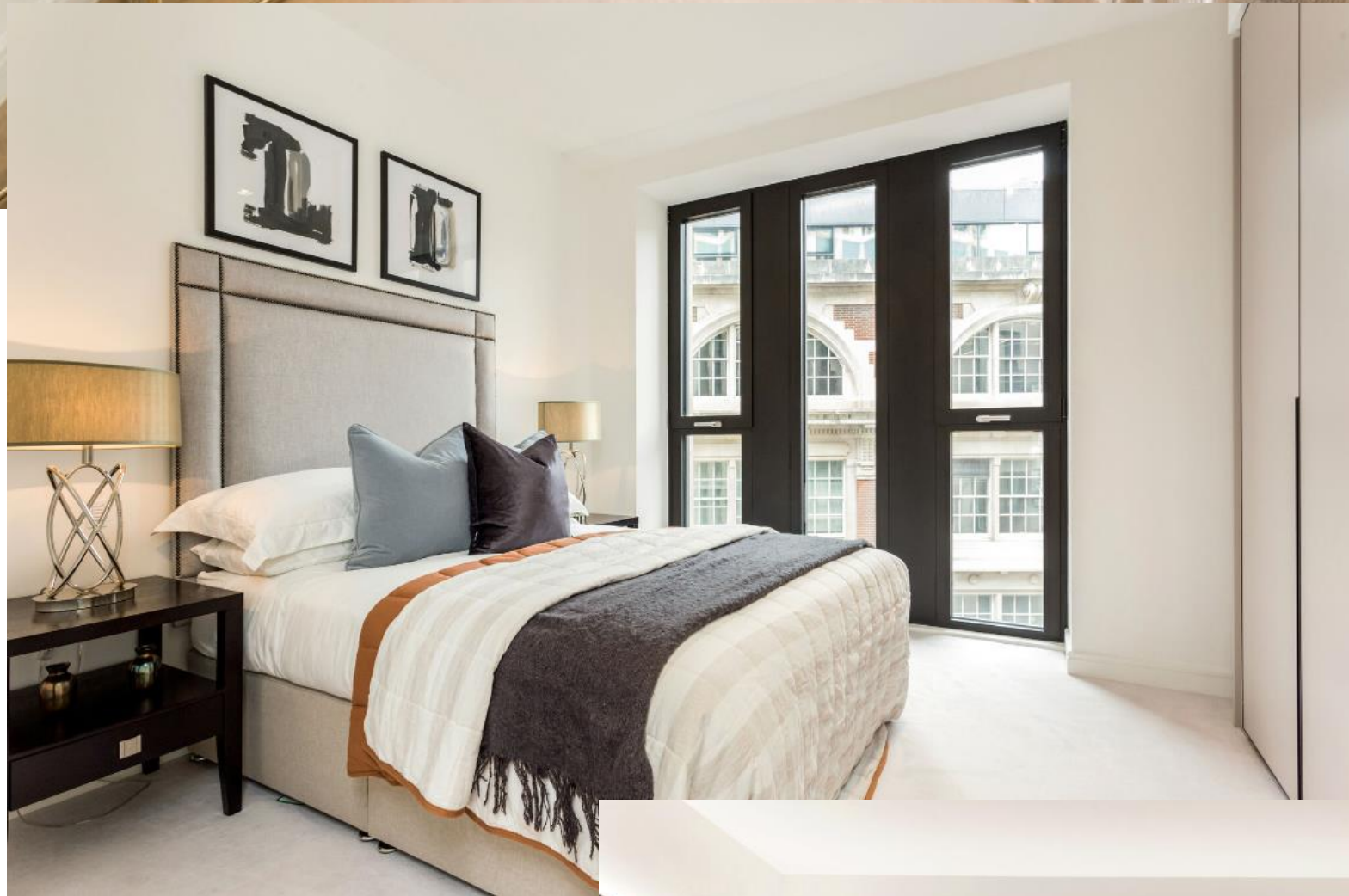
LODHA

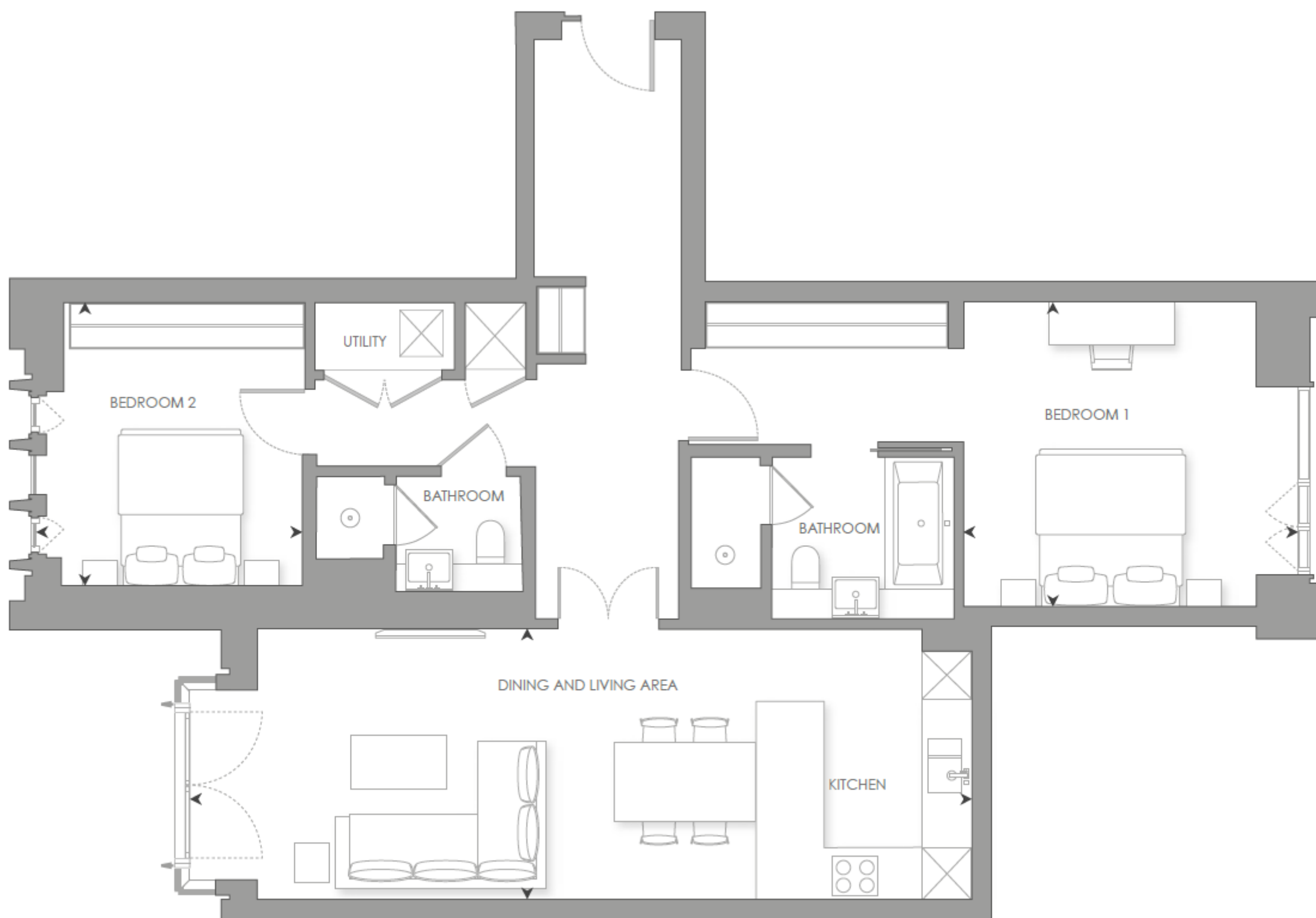
W.502
2 BEDROOM

THE INTERIORS



THE INTERIORS

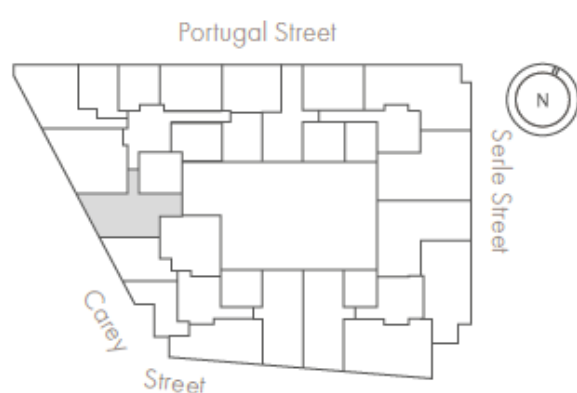




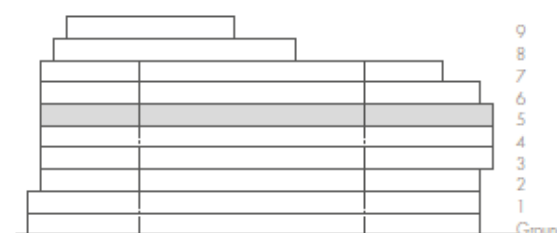
0m 1m 5m

Scale 1:100

LEVEL 5



ELEVATION



INTERNAL AREA

LIVING ROOM/DINING/KITCHEN

BEDROOM 1

BEDROOM 2

105 sq m

10.12 x 3.49m

4.28 x 3.95m

3.36 x 3.70m

1,133 sq ft

33' 5" x 11' 5"ft

14' 0" x 12' 11"ft

11' 0" x 12' 2"ft

- Dual aspect
- Tranquil garden views from master bedroom
- Grand entrance hall, with double doors to reception
- Bay window from living room with views over the LSE library
- Master bedroom suite with four-fixture en-suite and fitted wardrobe
- Social breakfast bar

W.502

2 BEDROOM

£3,000,000



LINCOLN SQUARE

LODHA

CONTACT DETAILS

LODHA UK

Lodha UK is an established London-based development company with a strong in-house development team with capabilities in planning, design and procurement, as well as marketing, sales and customer support. Lodha UK is the development subsidiary of Lodha Group, a multinational premium real estate developer with a tradition of creating world-class developments.

Show apartment at:
Lincoln Square
18 Portugal Street
WC2A 2AT

Lodha Developers UK Ltd.
3 St. James's Square
SW1Y 4JU
Tel: +44 20 7004 0910

LINCOLNSQUARE.CO.UK