



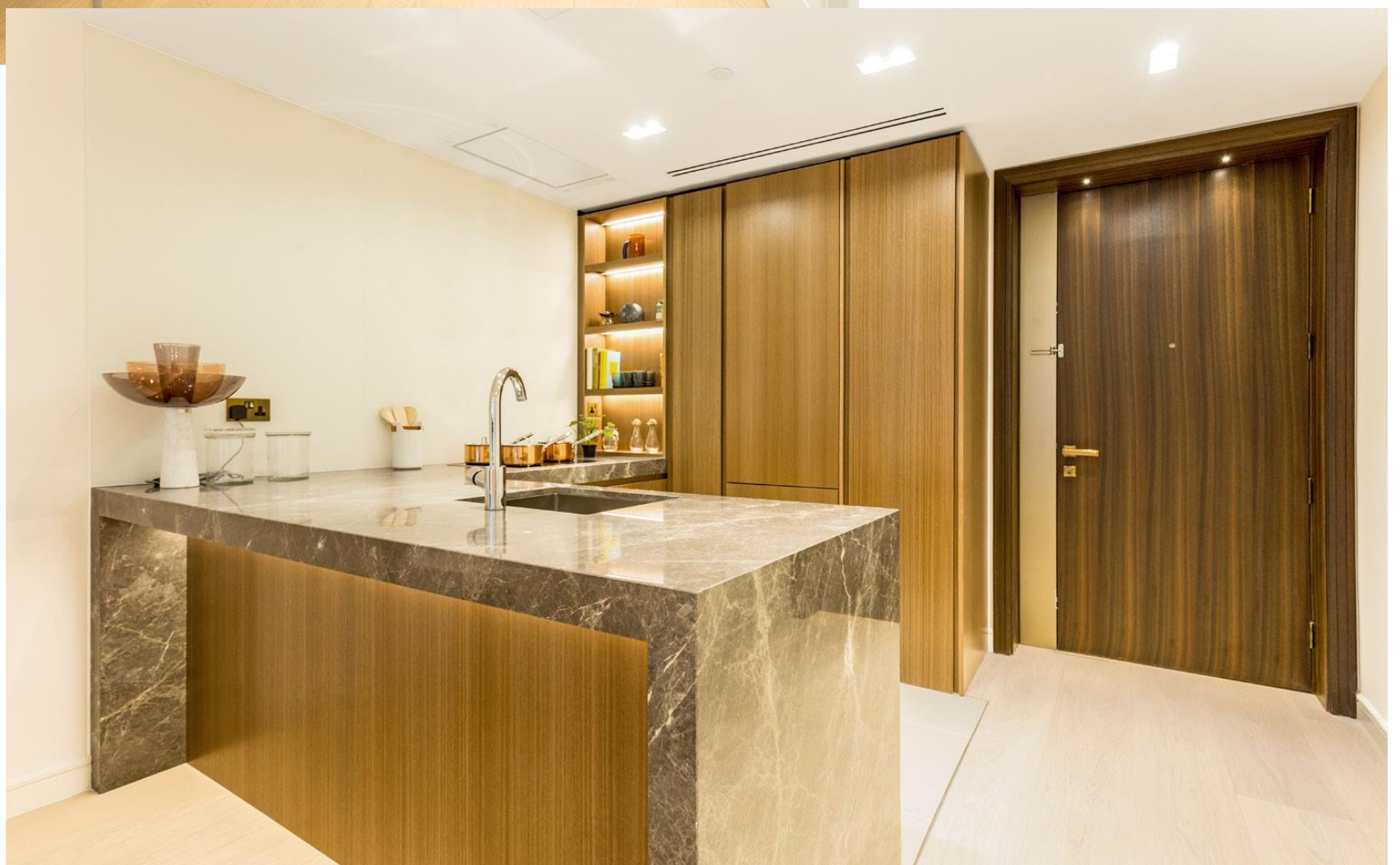
LINCOLN SQUARE

LODHA

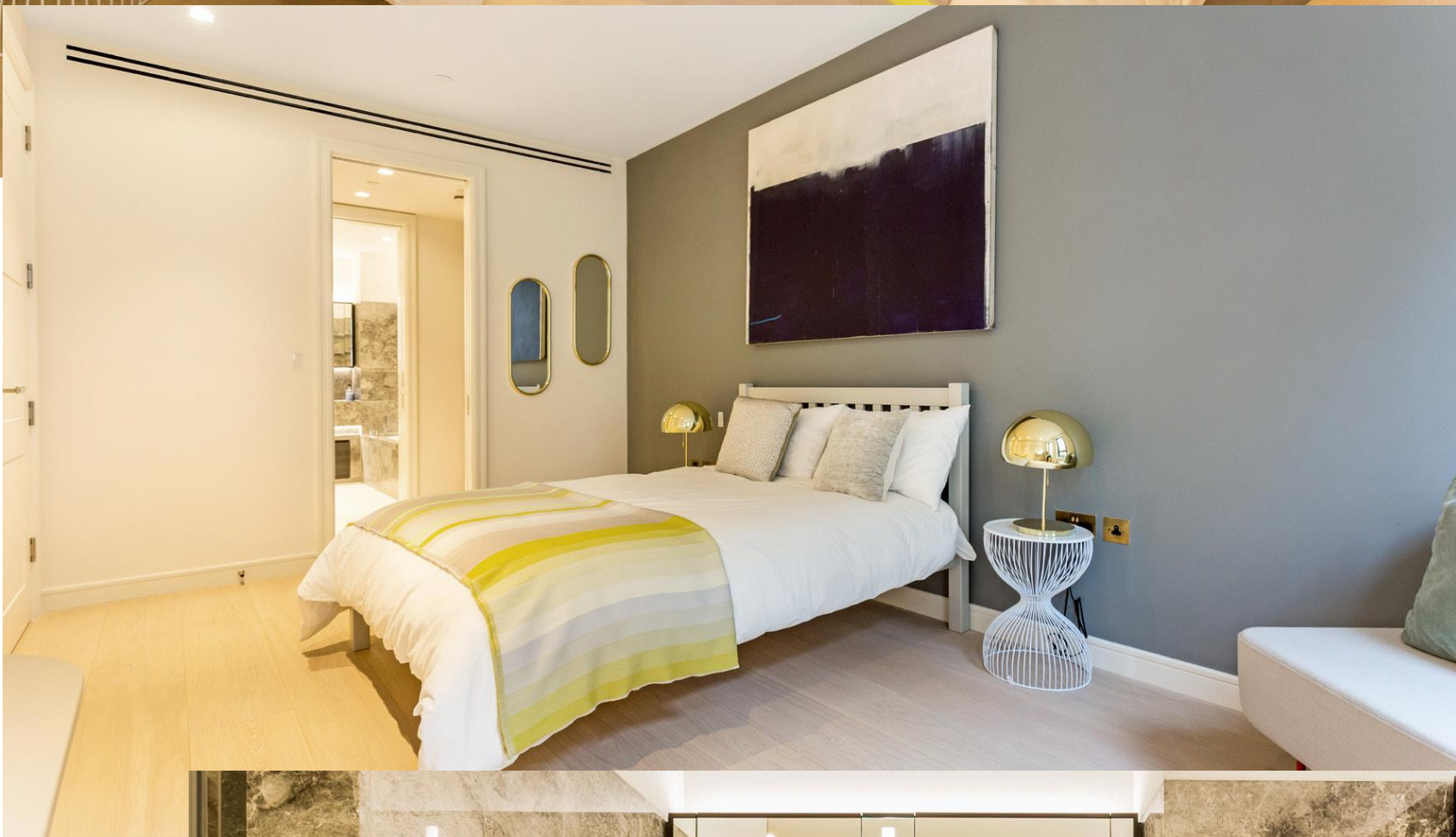
E.5

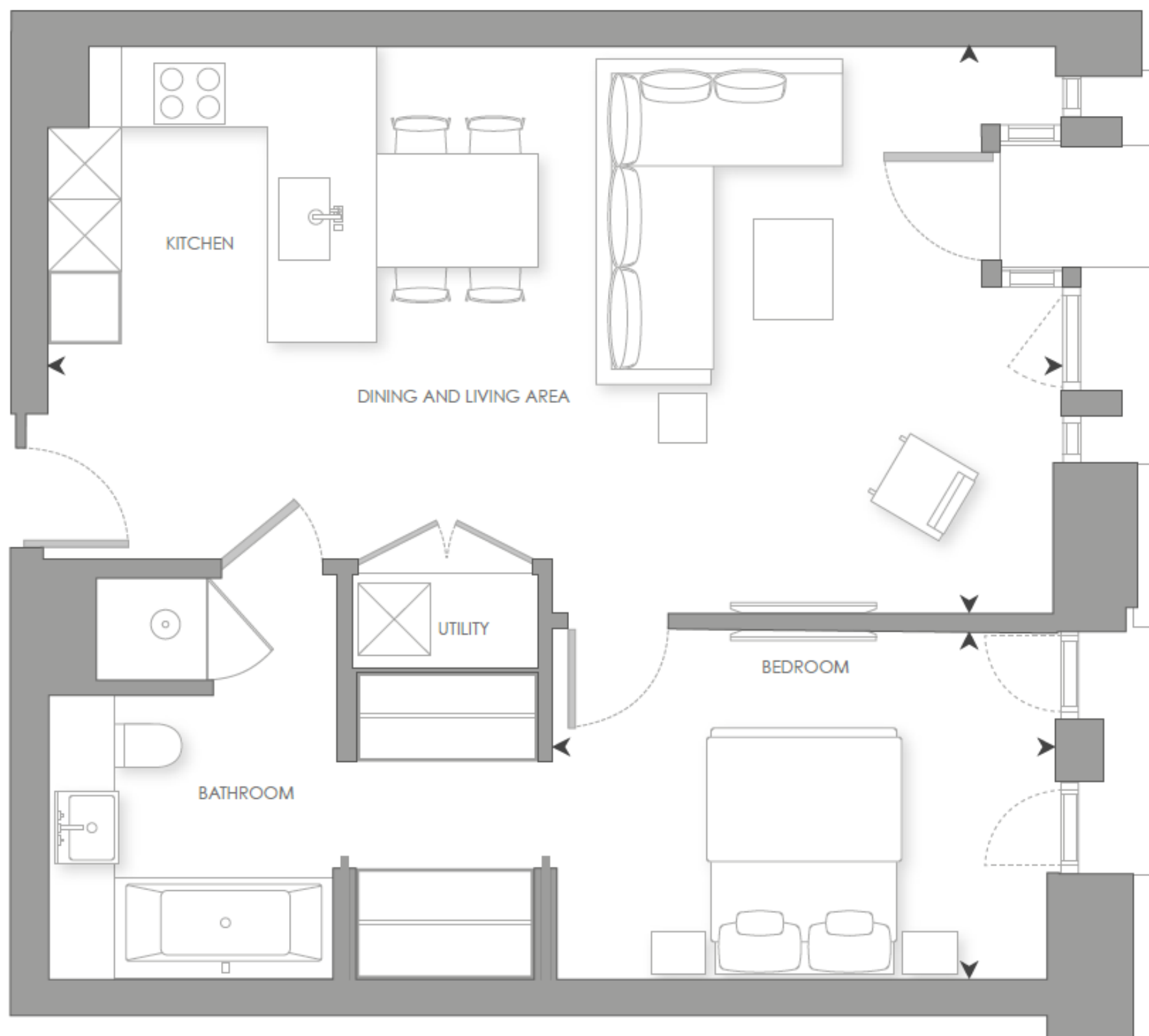
1 BEDROOM

THE INTERIORS



THE INTERIORS

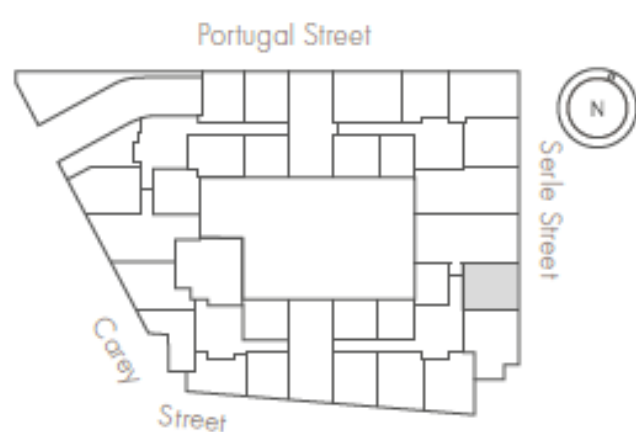




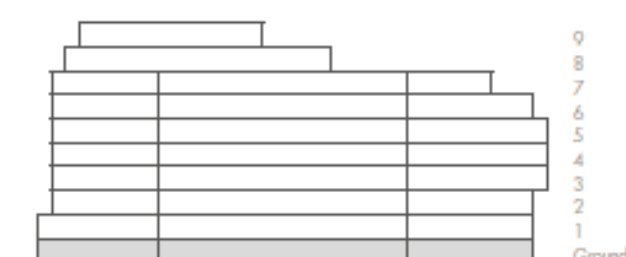
0m 1m 5m

Scale 1:75

GROUND FLOOR



ELEVATION



INTERNAL AREA

LIVING ROOM/DINING/KITCHEN
BEDROOM 1

64 sq m

8.38 x 4.67m

4.19 x 2.90m

688 sq ft

27' 6" x 15' 4"

13' 9" x 9' 6"

- Own front door
- Large master bedroom suite with four-fixture en-suite and walk-in wardrobe
- Social breakfast bar

E.5

1 BEDROOM

£1,650,000



LINCOLN SQUARE

LODHA

CONTACT DETAILS

LODHA UK

Lodha UK is an established London-based development company with a strong in-house development team with capabilities in planning, design and procurement, as well as marketing, sales and customer support. Lodha UK is the development subsidiary of Lodha Group, a multinational premium real estate developer with a tradition of creating world-class developments.

Show apartment at:
Lincoln Square
18 Portugal Street
WC2A 2AT

Lodha Developers UK Ltd.
3 St. James's Square
SW1Y 4JU
Tel: +44 20 7004 0910

LINCOLNSQUARE.CO.UK