



LINCOLN SQUARE

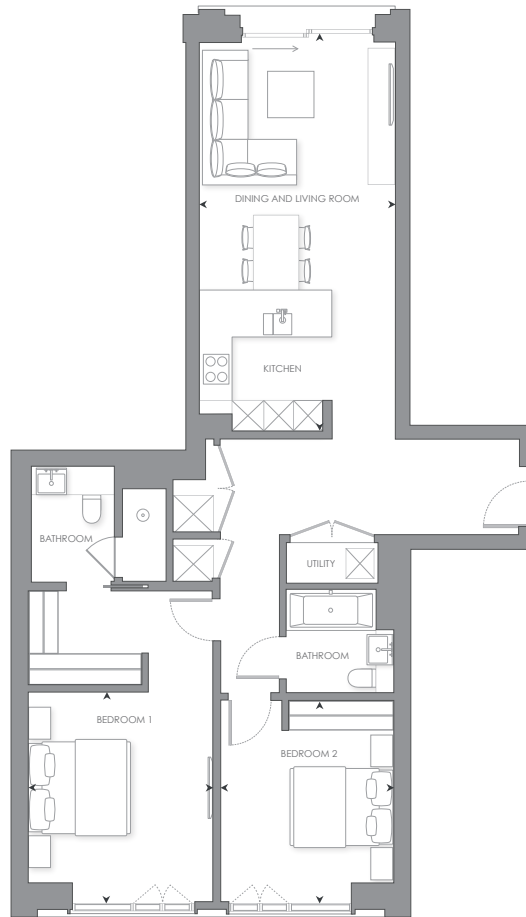
LODHA

N.602
2 BEDROOM

THE INTERIORS



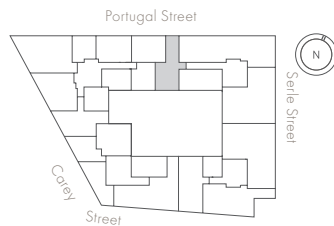




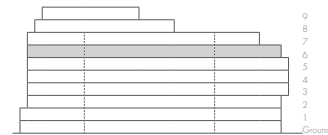
0m 1m 5m

Scale 1:100

LEVEL 6



ELEVATION



INTERNAL AREA

LIVING ROOM/DINING/KITCHEN

BEDROOM 1

BEDROOM 2

98 sq m

3.85 x 7.86 m

3.64 x 4.13 m

3.44 x 3.97 m

1,059 sq ft

12' 7" x 25' 9"

11' 11" x 13' 7" ft

11' 3" x 13' 0" ft

- Dual aspect, with views over the tranquil
- Master bedroom suite with en-suite and walk-in wardrobe
- Juliet balcony from the open-plan kitchen and living room
- Social breakfast bar

N.602

2 BEDROOM

£2,750,000



LINCOLN SQUARE

LODHA

CONTACT DETAILS

LODHA UK

Lodha UK is an established London-based development company with a strong in-house development team with capabilities in planning, design and procurement, as well as marketing, sales and customer support. Lodha UK is the development subsidiary of Lodha Group, a multinational premium real estate developer with a tradition of creating world-class developments.

Show apartment at:
Lincoln Square
18 Portugal Street
WC2A 2AT

Lodha Developers UK Ltd.
3 St. James's Square
SW1Y 4JU
Tel: +44 20 7004 0910

LINCOLNSQUARE.CO.UK