



LINCOLN SQUARE

LODHA

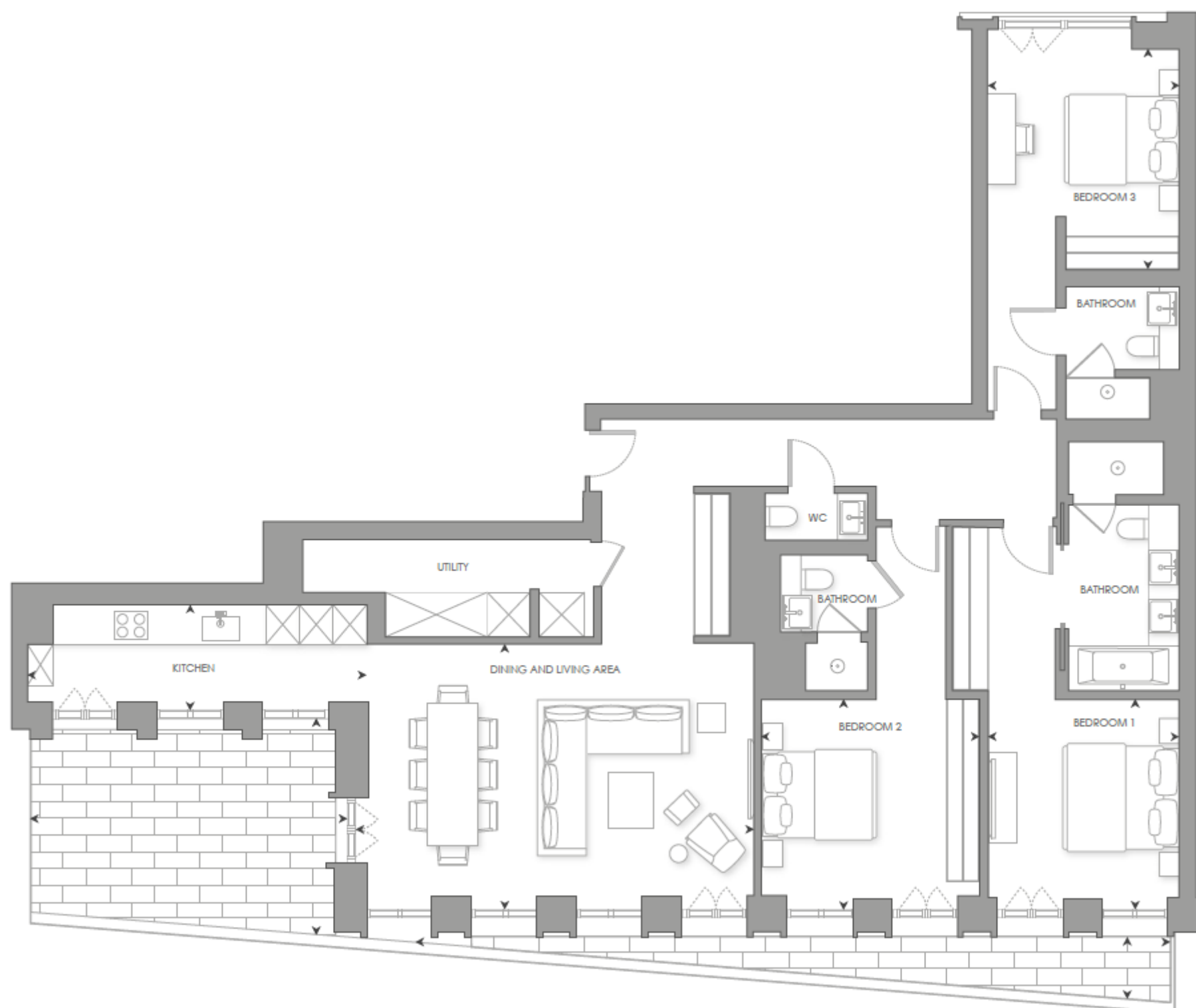
S.602
3 BEDROOM

THE INTERIORS



THE INTERIORS

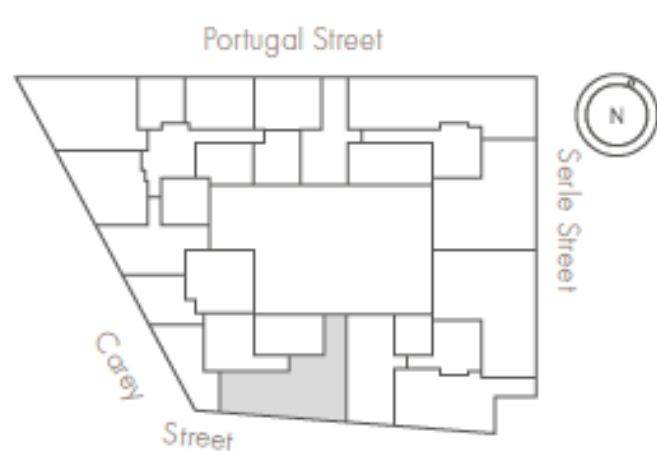




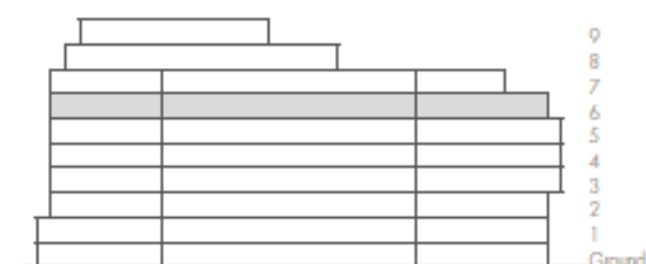
0m 1m 5m

Scale 1:100

LEVEL 6



ELEVATION



INTERNAL AREA	154 sq m	1,658 sq ft
LIVING ROOM/DINING	6.97 x 4.77 m	22' 10" x 15' 7" ft
KITCHEN	6.10 x 1.91m	20' 0" x 6' 3" ft
BEDROOM 1	3.75 x 3.4 m	19' 1" x 6' 3" ft
BEDROOM 2	3.91 x 3.77m	12' 10" x 12' 5" ft
BEDROOM 3	3.96 x 3.45 m	12' 11" x 11' 3" ft
TERRACE AREA	30 sq m	323 sq ft

- South facing terraces with rooftop views towards the Royal Courts of Justice
- Dual aspect, with garden views from bedroom 3
- Large, open-plan living area
- Master bedroom suite with five-fixture en-suite and fitted wardrobe
- En-suites to all bedrooms, plus an additional guest cloakroom
- Separate kitchen area
- Dedicated, large utility room

S.602
3 BEDROOM

£4,650,000



LINCOLN SQUARE

LODHA

CONTACT DETAILS

LODHA UK

Lodha UK is an established London-based development company with a strong in-house development team with capabilities in planning, design and procurement, as well as marketing, sales and customer support. Lodha UK is the development subsidiary of Lodha Group, a multinational premium real estate developer with a tradition of creating world-class developments.

Show apartment at:
Lincoln Square
18 Portugal Street
WC2A 2AT

Lodha Developers UK Ltd.
3 St. James's Square
SW1Y 4JU
Tel: +44 20 7004 0910

LINCOLNSQUARE.CO.UK