



LINCOLN SQUARE

LODHA

W.801  
2 BEDROOM



# THE INTERIORS

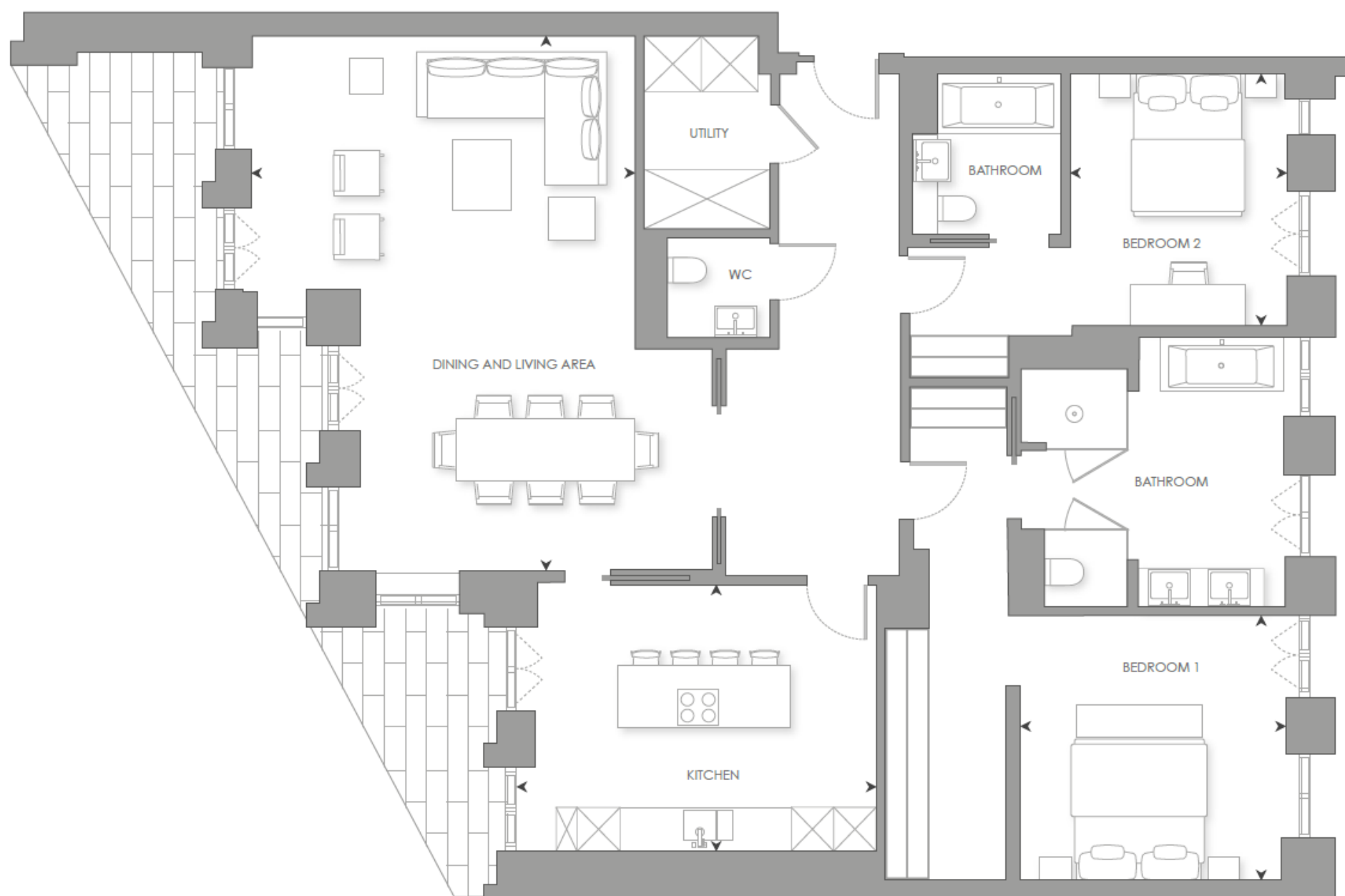




# THE INTERIORS



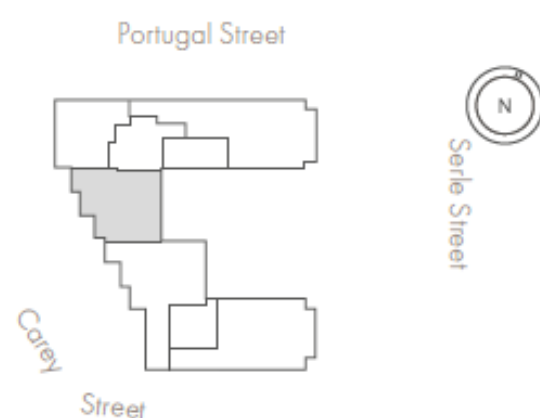




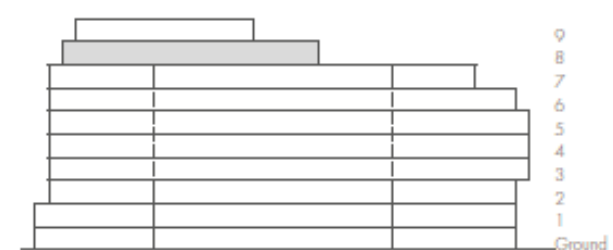
0m 1m 5m

Scale 1:100

## LEVEL 8



## ELEVATION



INTERNAL AREA  
LIVING ROOM/DINING  
KITCHEN  
BEDROOM 1  
BEDROOM 2  
BALCONY AREA

151 sq m  
5.45 x 7.63m  
3.87 x 5.12 m  
3.81 x 3.78m  
3.05 x 3.59m  
36 sq m

1,626 sq ft  
17' 11" x 25' 0"ft  
12' 8" x 16' 10" ft  
12' 6" x 12' 5"ft  
10' 0" x 11' 9"ft  
384 sq ft

- Dual aspect, with tranquil garden views from all bedrooms
- Terraces from all living areas
- Magnificent living area, with separate eat-in kitchen with island
- Large master bedroom suite with walk-in wardrobe and five fixture en-suite with freestanding bath
- En-suite to bedroom 2, guest cloakroom and separate utility room

**W.801**  
**2 BEDROOM**

**£4,950,000**





LINCOLN SQUARE

LODHA

## CONTACT DETAILS

### LODHA UK

Lodha UK is an established London-based development company with a strong in-house development team with capabilities in planning, design and procurement, as well as marketing, sales and customer support. Lodha UK is the development subsidiary of Lodha Group, a multinational premium real estate developer with a tradition of creating world-class developments.

Show apartment at:  
Lincoln Square  
18 Portugal Street  
WC2A 2AT

Lodha Developers UK Ltd.  
3 St. James's Square  
SW1Y 4JU  
Tel: +44 20 7004 0910

[LINCOLNSQUARE.CO.UK](http://LINCOLNSQUARE.CO.UK)