



LINCOLN SQUARE

LODHA

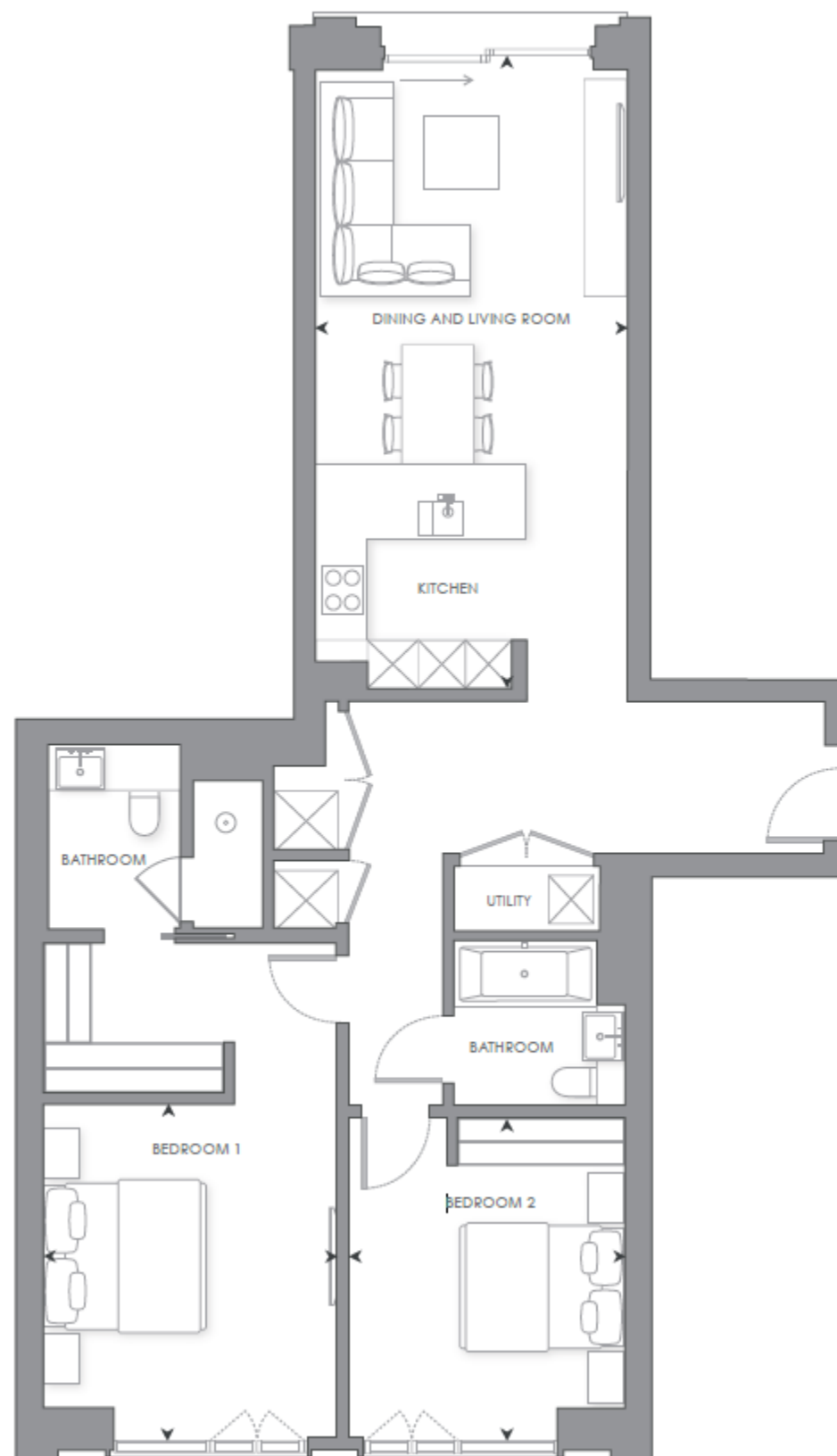
N.602
2 BEDROOMS

THE INTERIORS



THE INTERIORS

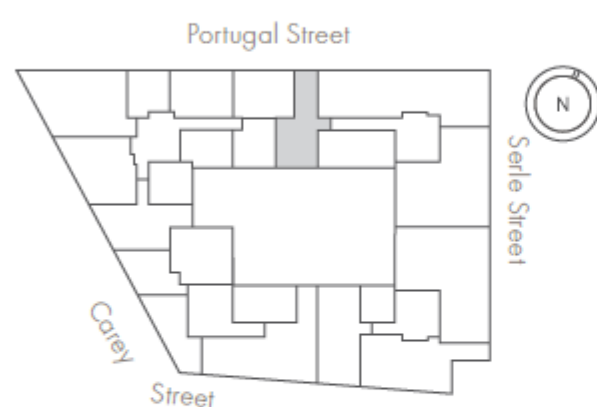




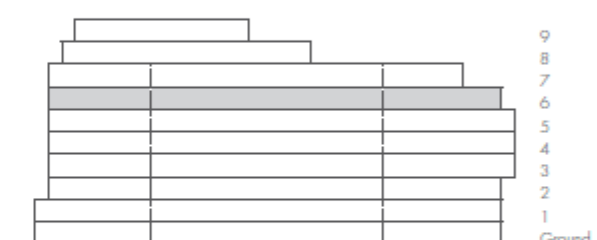
0m 1m 5m

Scale 1:100

LEVEL 6



ELEVATION



INTERNAL AREA	98 sq m	1,059 sq ft	- Dual aspect, with views over the tranquil
LIVING ROOM/DINING/KITCHEN	3.85 x 7.86 m	12' 7" x 25' 9"	- Master bedroom suite with en-suite and walk-in wardrobe
BEDROOM 1	3.64 x 4.13 m	11' 11" x 13' 7" ft	- Juliet balcony from the open-plan kitchen and living room
BEDROOM 2	3.44 x 3.97 m	11' 3" x 13' 0" ft	- Social breakfast bar

N.602
2 BEDROOMS

£2,750,000



LINCOLN SQUARE

LODHA

CONTACT DETAILS

LODHA UK

Lodha UK is an established London-based development company with a strong in-house development team with capabilities in planning, design and procurement, as well as marketing, sales and customer support. Lodha UK is the development subsidiary of Lodha Group, a multinational premium real estate developer with a tradition of creating world-class developments.

Show apartment at:
Lincoln Square
18 Portugal Street
WC2A 2AT

+44 20 7004 0910

LINCOLNSQUARE.CO.UK