



LINCOLN SQUARE

LODHA

S.106

2 BEDROOMS

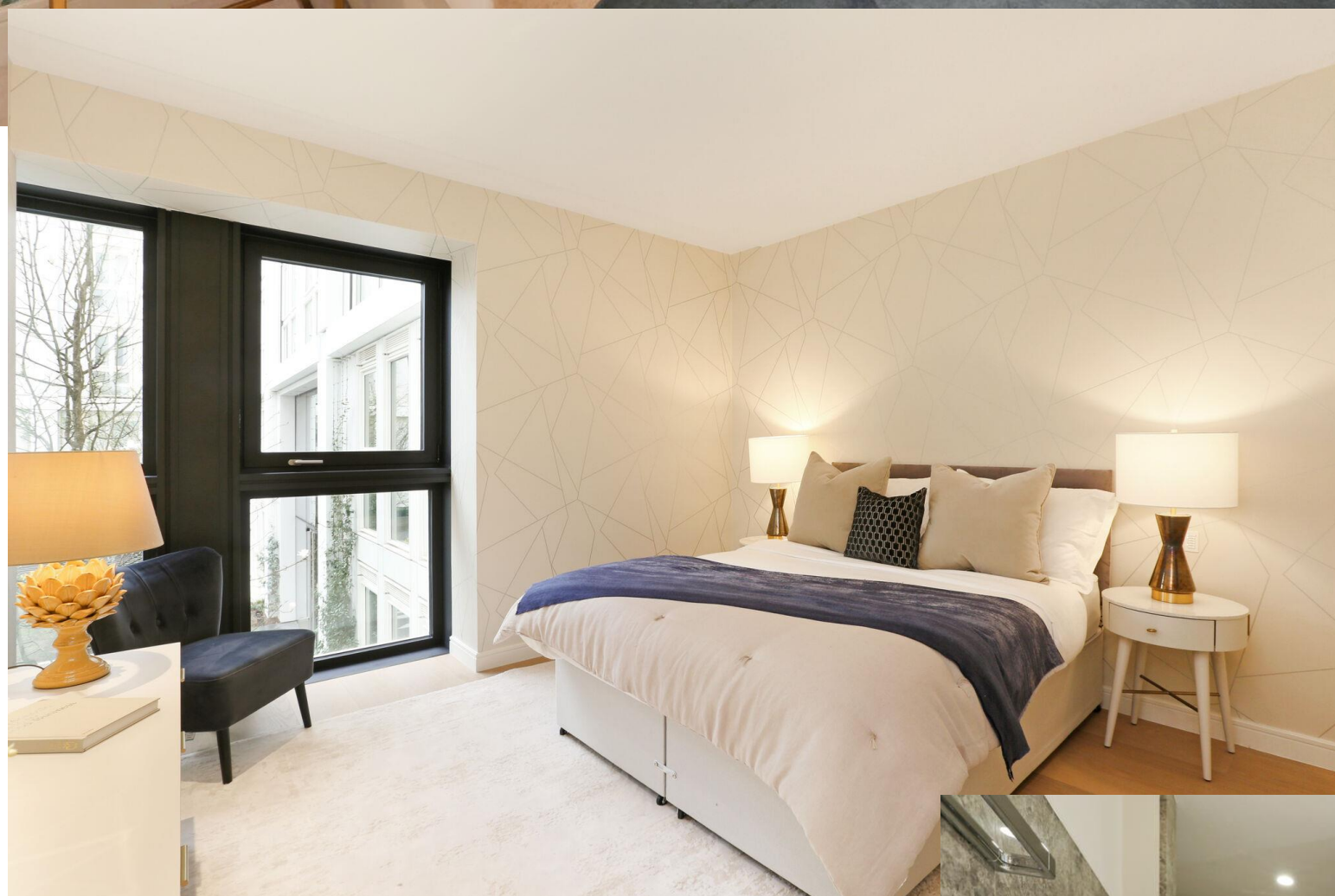


# THE INTERIORS





# THE INTERIORS



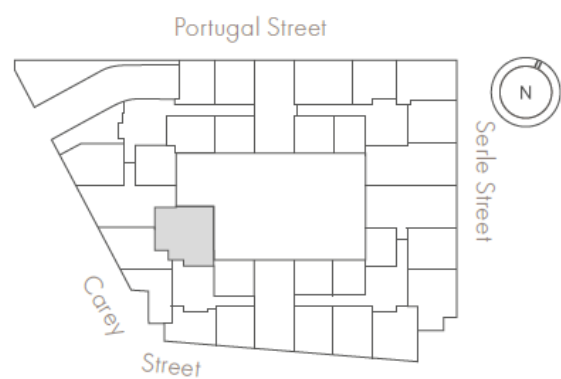




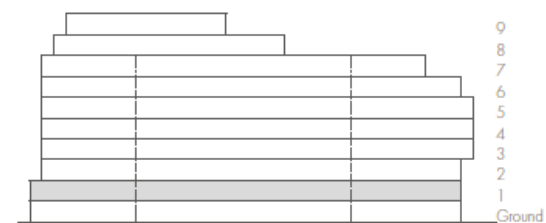
0m 1m 5m

Scale 1:100

## LEVEL 1



## ELEVATION



### INTERNAL AREA

LIVING ROOM/DINING/KITCHEN

BEDROOM 1

BEDROOM 2

110 sq m

11.34 x 4.10 m

3.70 x 3.78 m

3.70 x 2.80 m

1,188 sq ft

37' 2" x 13' 5" ft

12' 2" x 12' 5" ft

12' 2" x 9' 2" ft

- Dual aspect, with tranquil garden views
- Large, open-plan living area
- Master bedroom suite with fitted wardrobe
- Separate cloakroom
- Separate utility
- Social breakfast bar

# S.106

## 2 BEDROOMS

£2,890,000





LINCOLN SQUARE

LODHA

## CONTACT DETAILS

LODHA UK

Lodha UK is an established London-based development company with a strong in-house development team with capabilities in planning, design and procurement, as well as marketing, sales and customer support. Lodha UK is the development subsidiary of Lodha Group, a multinational premium real estate developer with a tradition of creating world-class developments.

Show apartment at:  
Lincoln Square  
18 Portugal Street  
WC2A 2AT

+44 20 7004 0910

[LINCOLNSQUARE.CO.UK](http://LINCOLNSQUARE.CO.UK)