



LINCOLN SQUARE

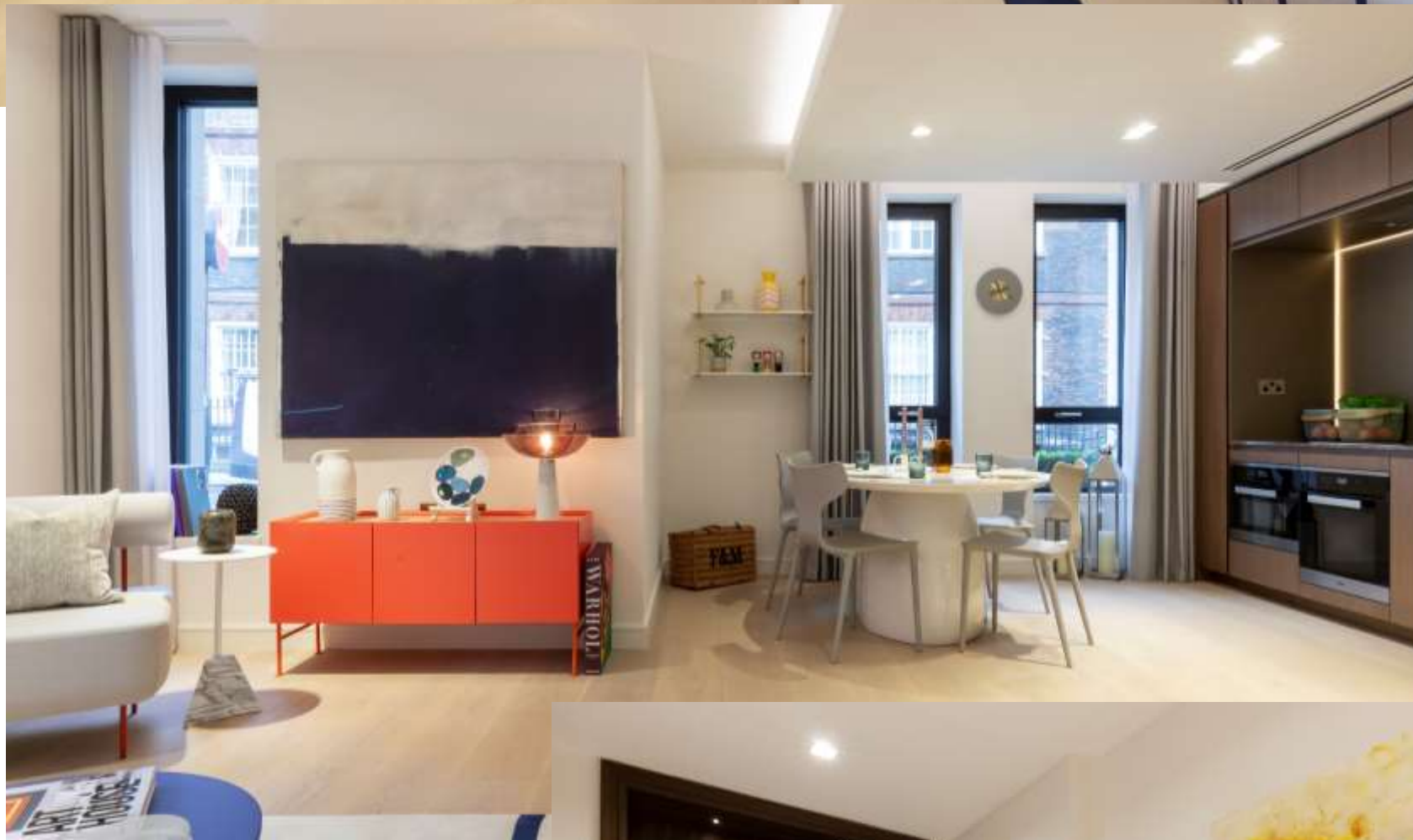
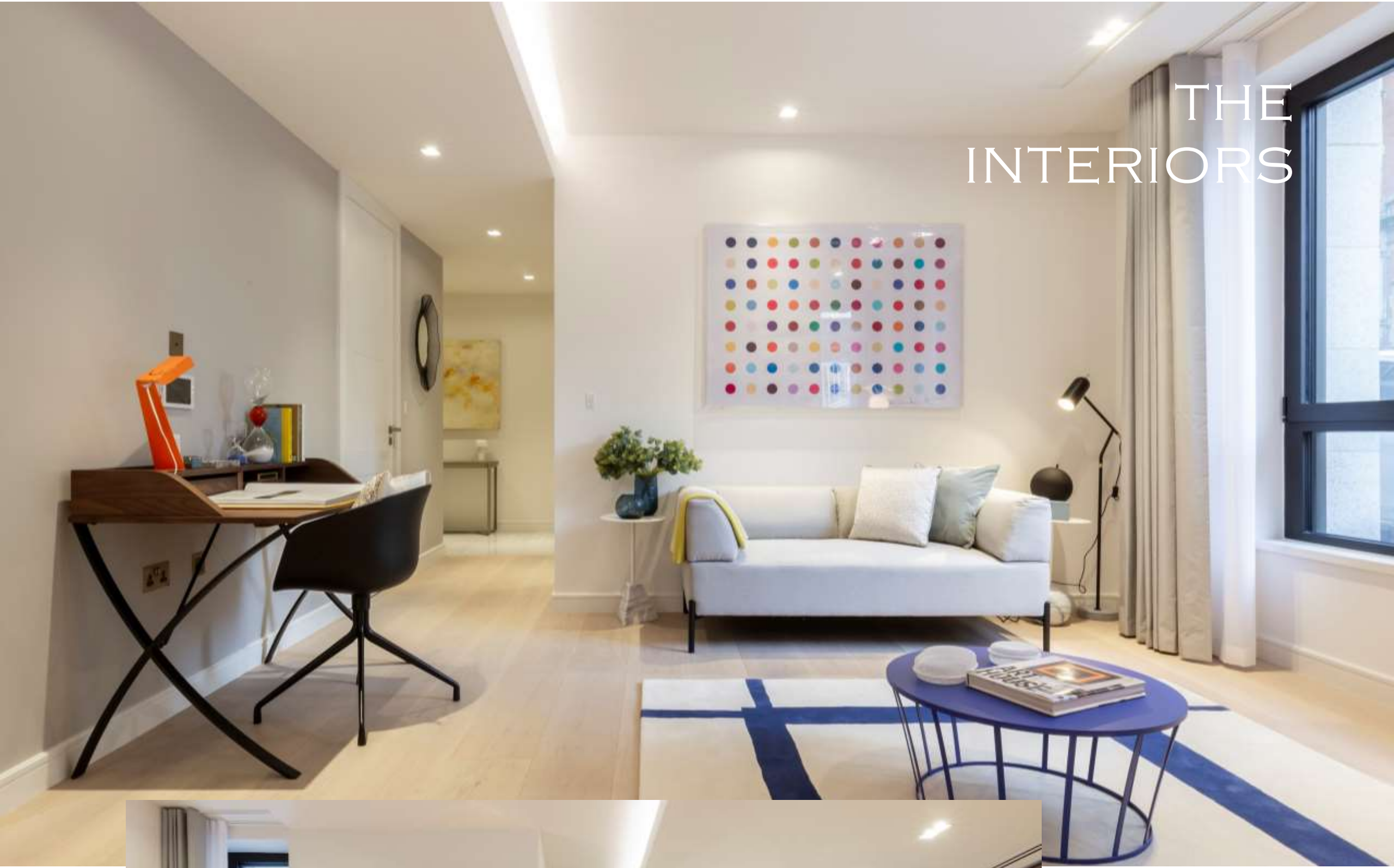
LODHA

N.3

1 BEDROOM

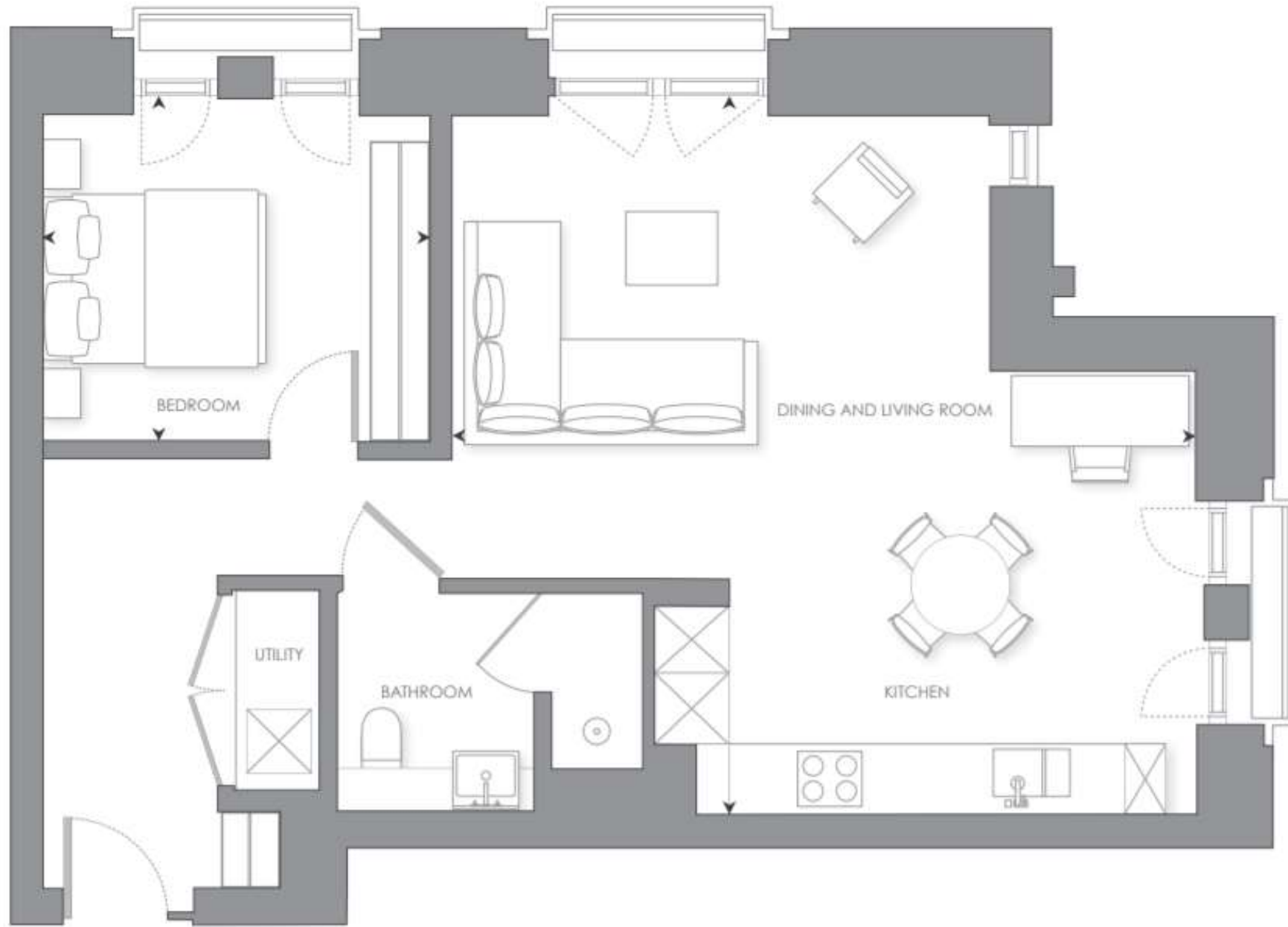
\*AVAILABLE WITH TENANTS IN SITU FOR INVESTORS

# THE INTERIORS

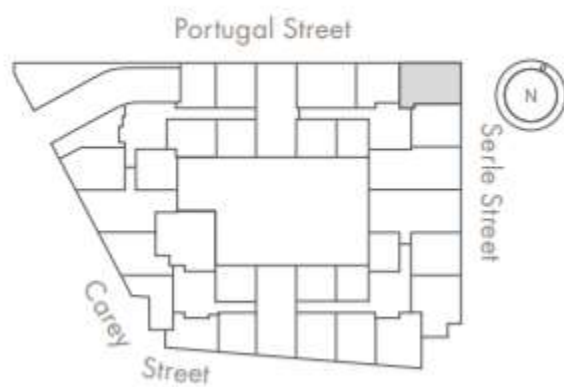


THE  
INTERIORS

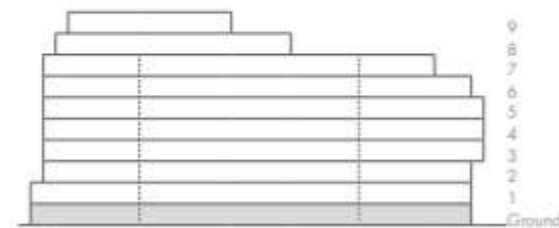




**GROUND FLOOR**



**ELEVATION**



INTERNAL AREA	65 sq m	701 sq ft
LIVING ROOM/DINING/KITCHEN	6.79 x 6.55 m	22' 3" x 21' 6"
BEDROOM 1	3.58 x 3.17 m	11' 8" x 10' 4"

- Dual aspect
- Master bedroom area with fitted wardrobe
- Additional hanging space in the hallway
- Floor to ceiling windows

**N.3**

1 BEDROOM

£1,650,000



LINCOLN SQUARE

LODHA

## CONTACT DETAILS

LODHA UK

Lodha UK is an established London-based development company with a strong in-house development team with capabilities in planning, design and procurement, as well as marketing, sales and customer support. Lodha UK is the development subsidiary of Lodha Group, a multinational premium real estate developer with a tradition of creating world-class developments.

Show apartment at:  
Lincoln Square  
18 Portugal Street  
WC2A 2AT

+44 20 7004 0910

[LINCOLNSQUARE.CO.UK](http://LINCOLNSQUARE.CO.UK)