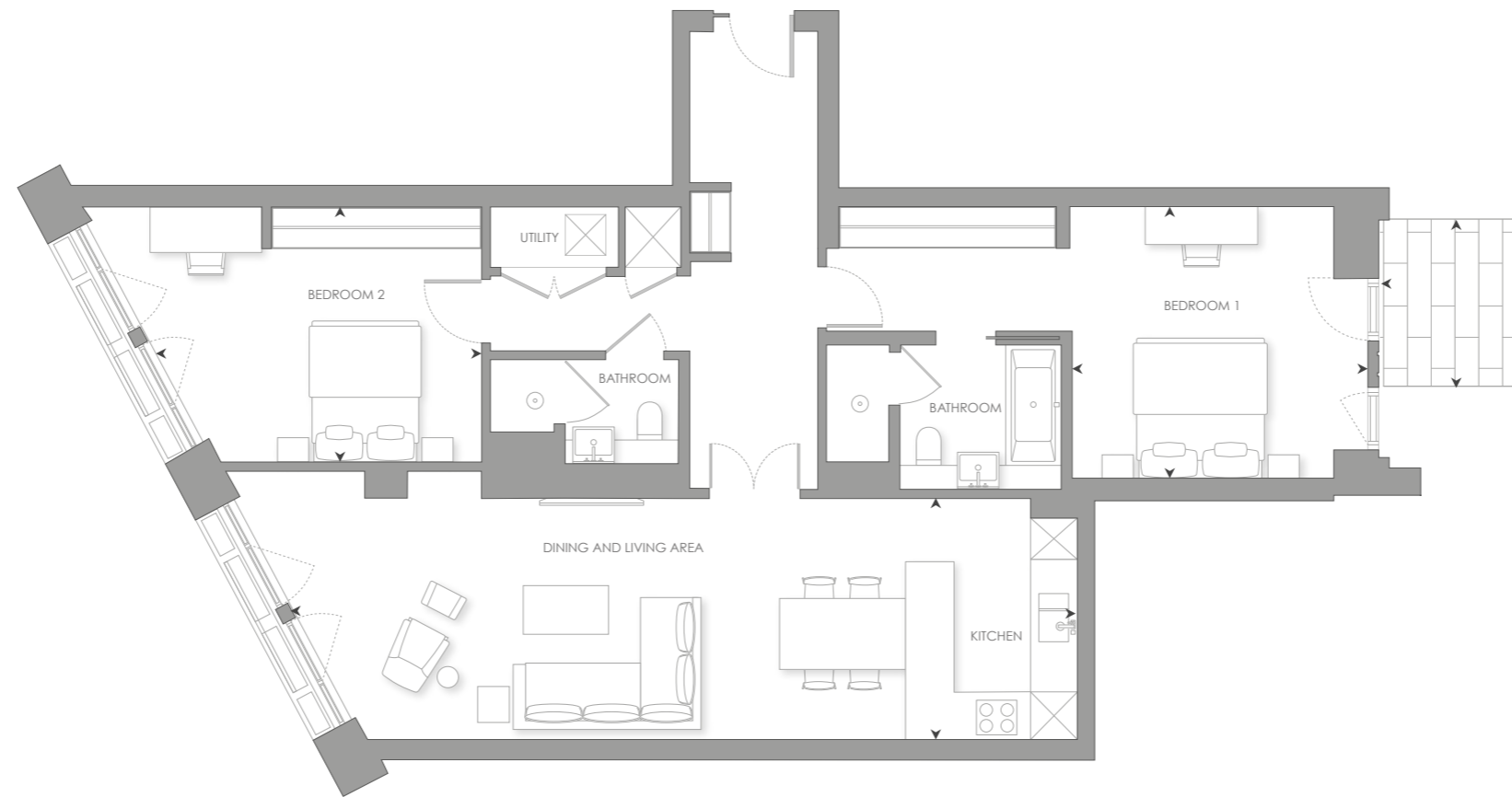


## W.4 - 2 BEDROOM

INTERNAL AREA	117 sq m	1,256 sq ft
LIVING ROOM/DINING/KITCHEN	11.38 x 3.49m	37' 4" x 11' 5"ft
BEDROOM 1	4.28 x 3.95m	14' 0" x 12' 11"ft
BEDROOM 2	4.87 x 3.70m	15' 10" x 12' 2"ft
PATIO AREA	5 sq m	58 sq ft

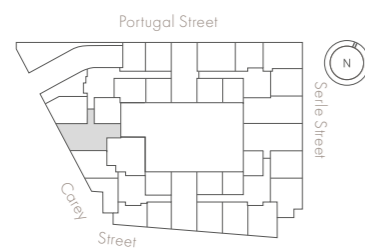
- Dual aspect
- Grand entrance hall, with double doors to reception
- Master bedroom suite with four-fixture en-suite and fitted wardrobe
- Private patio from master bedroom



0m 1m 5m

Scale 1:100

### GROUND FLOOR



### ELEVATION

